

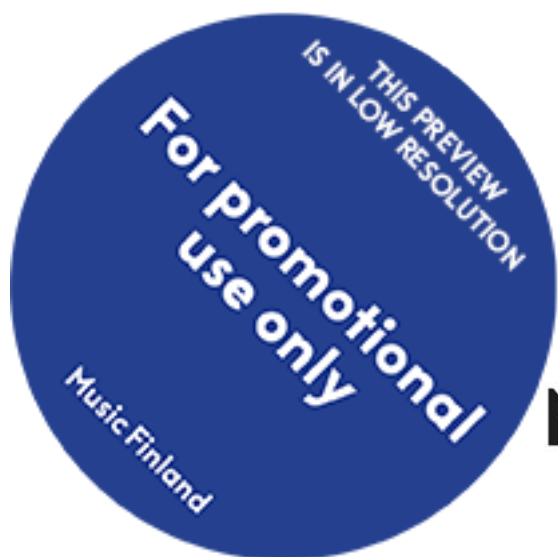
Markku Nikula

A Magical Dance...

(...over the Volcanos... under the Icebergs)

for piano

1995



Music Finland

Copyright © by the Composer

All Rights Reserved

ation may be copied
m or by any means
on of the composer



Markku Nikula

A Magical Dance...
(...over the Volcanos,... under the Icebergs.)

for piano

THIS PREVIEW
IS IN LOW RESOLUTION

**For promotional
use only**

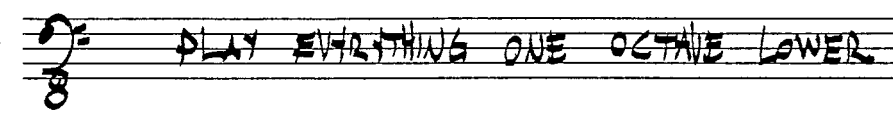
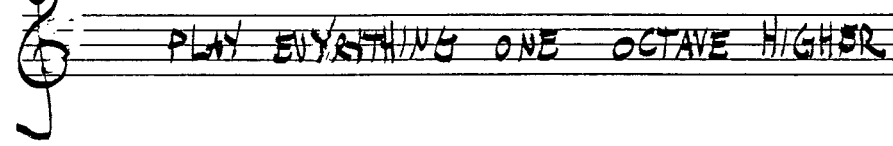
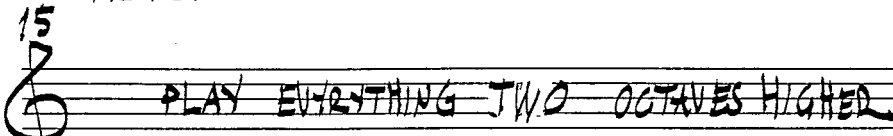
Music Finland

EXPLANATION OF SYMBOLS

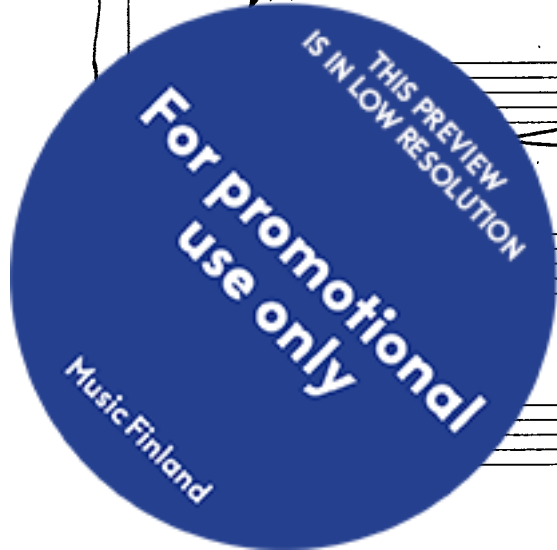
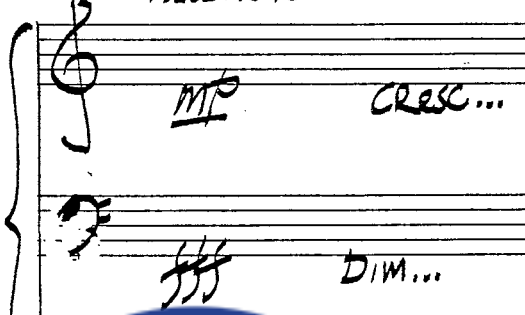
CHROMATIC CLUSTERS WITH TIME VALUES



THE KEYS



NO GLOBAL ORDERS FOR DYNAMICS ARE USED
EACH STAVE HAS ITS OWN DYNAMICAL ORDERS
TO ILLUSTRATE:



A Magical Dance...

(...over the Volcanos... under the Icebergs.)

♩ ≈ 88



Handwritten musical notation for the first system. The treble clef staff contains a melodic line with a large slur over the first two measures, which includes two triplet markings. The bass clef staff contains a bass line with two triplet markings. The key signature has two sharps (F# and C#).

Handwritten musical notation for the second system. The treble clef staff has a slur over the first measure. The bass clef staff features a complex rhythmic pattern with multiple triplet markings. The key signature remains two sharps.

Handwritten musical notation for the third system. The treble clef staff has a slur over the first two measures. The bass clef staff continues with rhythmic complexity, including several triplet markings. The key signature is two sharps.

Handwritten musical notation for the fourth system. The treble clef staff has a slur over the first two measures. The bass clef staff has a triplet marking. The key signature is two sharps.

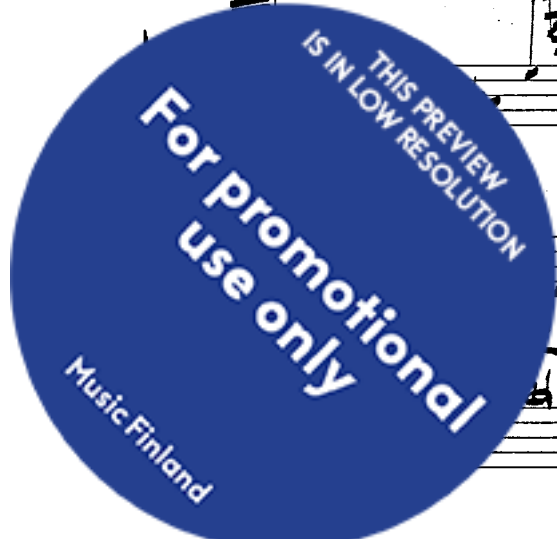
THIS PREVIEW
IS IN LOW RESOLUTION
**For promotional
use only**
Music Finland

Handwritten musical score, first system. Treble and bass clefs. Includes triplets, a slur over the first two measures, and dynamic markings *mp* and *crusc...*.

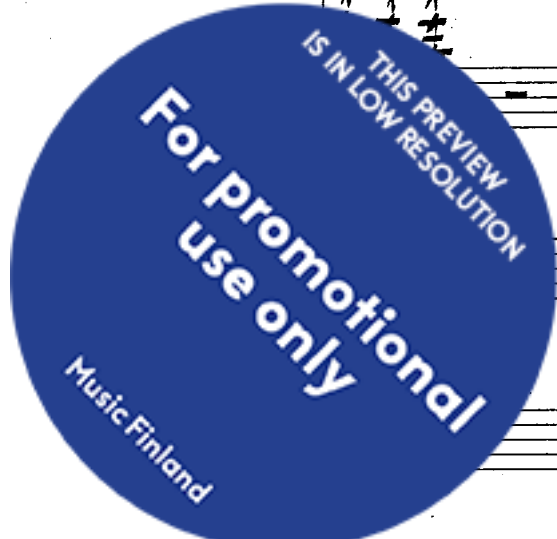
Handwritten musical score, second system. Treble and bass clefs. Includes triplets, a slur over the first two measures, and dynamic markings *mp* and *rit.*. Pedal markings **Ped* are present below the bass line.

Handwritten musical score, third system. Treble and bass clefs. Includes triplets, a slur over the first two measures, and dynamic markings *mp* and *a tempo*. Pedal markings **Ped* are present below the bass line.

Handwritten musical score, fourth system. Treble and bass clefs. Includes triplets, a slur over the first two measures, and dynamic markings *crusc.* and *rit.*. Pedal markings **Ped* are present below the bass line.



♩ 2/8



Handwritten musical score for the first system. It consists of two staves, treble and bass. The music is in a key with three sharps (F#, C#, G#) and a 4/4 time signature. The first measure is marked with a piano dynamic (p) and a fermata. The second measure is marked with a piano dynamic (p) and an asterisk (*). The rest of the system contains complex chords and triplets, with some notes marked with accents (>). The bass staff has a fermata over the first measure and a triplett sign over the second measure.

Handwritten musical score for the second system. It consists of two staves, treble and bass. The music continues with complex chords and triplets. The first measure is marked with a piano dynamic (p) and an asterisk (*). The second measure is marked with a piano dynamic (p) and an asterisk (*). The rest of the system contains complex chords and triplets, with some notes marked with accents (>). The bass staff has a fermata over the first measure and a triplett sign over the second measure.

Handwritten musical score for the third system. It consists of two staves, treble and bass. The music includes a tempo change to rit. (ritardando) and a dynamic marking of pp (pianissimo). The first measure is marked with a piano dynamic (p) and an asterisk (*). The second measure is marked with a piano dynamic (p) and an asterisk (*). The rest of the system contains complex chords and triplets, with some notes marked with accents (>). The bass staff has a fermata over the first measure and a triplett sign over the second measure.



Handwritten musical score for the fourth system. It consists of two staves, treble and bass. The music continues with complex chords and triplets. The first measure is marked with a piano dynamic (p) and an asterisk (*). The second measure is marked with a piano dynamic (p) and an asterisk (*). The rest of the system contains complex chords and triplets, with some notes marked with accents (>). The bass staff has a fermata over the first measure and a triplett sign over the second measure.

Handwritten musical notation for the first system, featuring treble and bass staves with complex rhythmic patterns and triplets.

Handwritten musical notation for the second system, including dynamic markings like 'p' and 'pp' and various articulation marks.

Handwritten musical notation for the third system, showing dense rhythmic textures and slurs.

Handwritten musical notation for the fourth system, including a large blue watermark and various musical symbols.

THIS PREVIEW IS IN LOW RESOLUTION
For promotional use only
Music Finland

Handwritten musical score for the first system, featuring a grand staff with treble and bass clefs. The music includes complex rhythmic patterns with triplets and slurs, and a key signature of one sharp (F#).

Handwritten musical score for the second system, continuing the piece. It includes a "Lh." marking and a "mp" dynamic marking. The notation is dense with triplets and slurs.

Handwritten musical score for the third system, concluding the piece. It features a "mp" dynamic marking and a "Lh." marking. The notation includes triplets and slurs.

THIS PREVIEW
IS IN LOW RESOLUTION
**For promotional
use only**
Music Finland

Handwritten musical score for the first system. The top staff is in treble clef and the bottom staff is in bass clef. The music consists of several measures with complex rhythmic patterns, including triplets and sixteenth notes. The key signature has one sharp (F#). The system ends with a double bar line and a repeat sign.

Handwritten musical score for the second system. The top staff is in treble clef and the bottom staff is in bass clef. The music continues with complex rhythmic patterns, including triplets and sixteenth notes. The system ends with a double bar line and a repeat sign.

Handwritten musical score for the third system. The top staff is in treble clef and the bottom staff is in bass clef. The music continues with complex rhythmic patterns, including triplets and sixteenth notes. The system ends with a double bar line and a repeat sign.

THIS PREVIEW
IS IN LOW RESOLUTION
**For promotional
use only**
Music Finland

♩ 120-126

* Ped

allegro

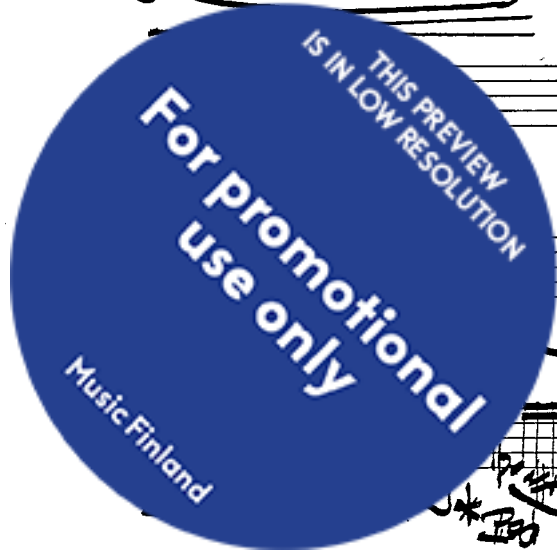
rit. *mp* * Ped

allegro

rit. * Ped *

cresc...

* Ped * Ped * Ped



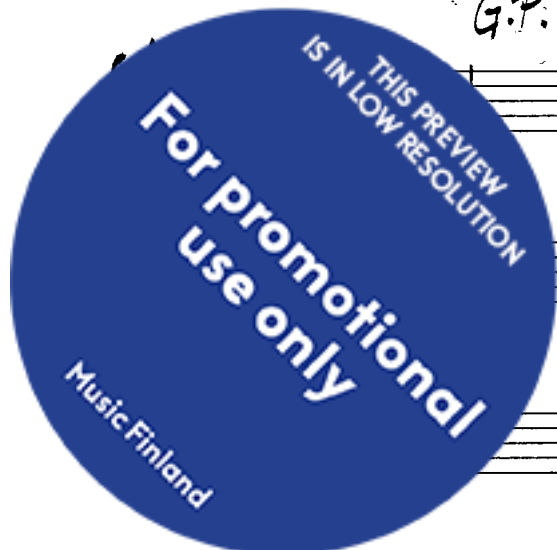
Handwritten musical score system 1. The upper staff contains a melodic line with a crescendo hairpin. The lower staff contains a series of chords, with a *pp* dynamic marking and a crescendo hairpin. A handwritten note below the system reads: * Ped

Handwritten musical score system 2. The upper staff continues the melodic line. The lower staff contains a series of chords, with a *p* dynamic marking.

Handwritten musical score system 3. The upper staff contains a melodic line with a *pp* dynamic marking. The lower staff contains a series of chords.

G.P. $\text{♩} \approx 192$

Handwritten musical score system 4. The upper staff contains a melodic line. The lower staff contains a series of chords, with a *pp* dynamic marking and a *Cresc...* hairpin. A handwritten note above the system reads: (FREE CLUSTERS)



Handwritten musical score for the first system. The top staff is in treble clef and the bottom staff is in bass clef. The music consists of vertical stems and beams, indicating a dense texture. Handwritten annotations include "Cresc." above the first staff, "Cresc." below the first staff, and "f" below the second staff. A star symbol is at the end of the system.

Handwritten musical score for the second system. The top staff is in treble clef and the bottom staff is in bass clef. The top staff contains melodic lines with triplets and slurs, with handwritten notes "(Loco)", "Cresc...", and "8va". The bottom staff contains vertical stems. Handwritten annotations include "MP" below the first staff and "Ped" below the second staff. A star symbol is at the end of the system.

Handwritten musical score for the third system. The top staff is in treble clef and the bottom staff is in bass clef. The top staff contains melodic lines with slurs and accents. The bottom staff contains vertical stems. Handwritten annotations include "MP" below the first staff. A star symbol is at the end of the system.



Handwritten musical score for the fourth system. The top staff is in treble clef and the bottom staff is in bass clef. The top staff contains vertical stems. The bottom staff contains melodic lines with slurs and triplets. Handwritten annotations include "Cresc..." above the first staff and "Cresc..." below the first staff. A star symbol is at the end of the system.

(APPROXIMATE CHROMATIC CLUSTER)

Handwritten musical score for the first system. The piano part (top staff) features a series of vertical lines representing clusters, with a bracket above them labeled "(APPROXIMATE CHROMATIC CLUSTER)". The bass line (bottom staff) contains rhythmic notation with accents and slurs. A "Ped" (pedal) marking is present below the bass line. The system ends with a treble clef and the number "15".

15 $\text{A}76$

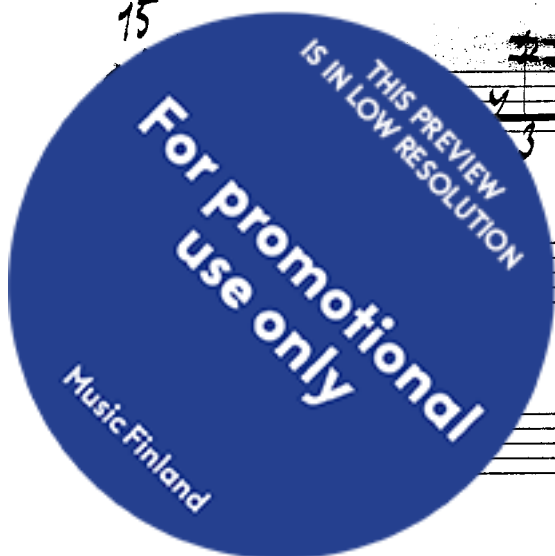
Handwritten musical score for the second system. The piano part (top staff) shows rhythmic notation with accents and slurs, including a "3" (triple) marking. The bass line (bottom staff) is mostly empty. A "Ped" (pedal) marking is written below the piano part. The system ends with a treble clef and the number "15".

15

Handwritten musical score for the third system. The piano part (top staff) shows rhythmic notation with accents and slurs, including a "3" (triple) marking. The bass line (bottom staff) contains rhythmic notation with accents and slurs. A "Ped" (pedal) marking is written below the piano part. The system ends with a treble clef and the number "15".

15

Handwritten musical score for the fourth system. The piano part (top staff) shows rhythmic notation with accents and slurs, including a "3" (triple) marking. The bass line (bottom staff) contains rhythmic notation with accents and slurs. A "Ped" (pedal) marking is written below the piano part. The system ends with a treble clef and the number "15".



15

15

15

