

Olli Kortekangas

Triptyykki
seitsemälle

(2008)

PARTITURA

 FENNICA GEHRMAN

Triptyykki seitsemälle

1. (Uhma)

OLLI KORTEKANGAS (2008)

♩ = 128 c.

accel.

Cl. (in La)

Cor. (in Fa)

Tbn.

Pfte

Arpa

Vc. 1

Vc. 2

p

mp

ppp

pp sempre

♩ = 152 c.

Cl. (in La)

Cor. (in Fa)

Tbn.

Pfte

Arpa

Vc. 1

Vc. 2

mf

ppp

pp

mf

pp

mf

p

11

Cl. (in La)
Cor. (in Fa)
Tbn.

Pfte

Arpa

Vc. 1
Vc. 2

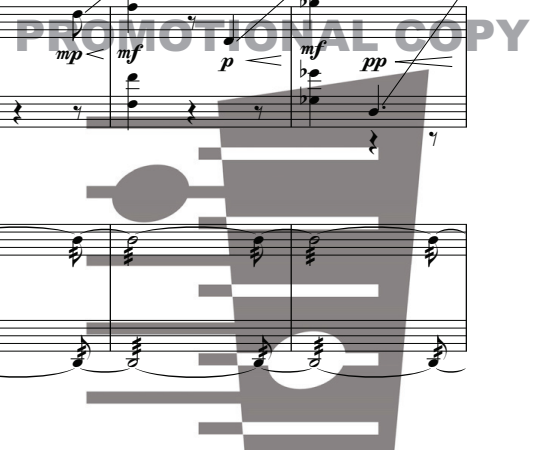
17

Cl. (in La)
Cor. (in Fa)
Tbn.

Pfte

Arpa

Vc. 1
Vc. 2



rit.

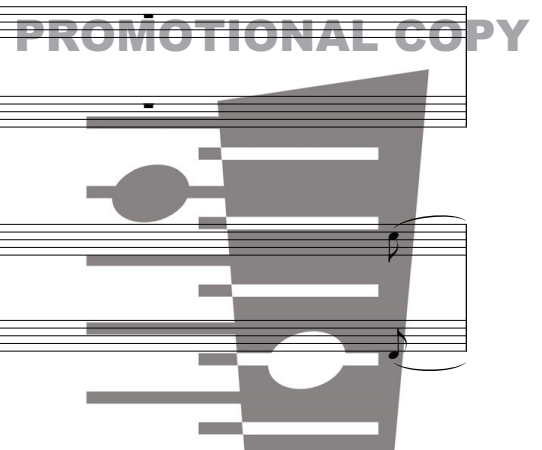
24

Cl. (in La)
Cor. (in Fa)
Tbn.
Pfte
Arpa
Vc. 1
Vc. 2

30

♩ = 128 c.

Cl. (in La)
Cor. (in Fa)
Tbn.
Pfte
Arpa
Vc. 1
Vc. 2



32

Cl. (in La)

Cor. (in Fa)

Tbn.

Pfte

Arpa

Vc. 1

Vc. 2

34

Cl. (in La)

Cor. (in Fa)

Tbn.

Pfte

Arpa

Vc. 1

Vc. 2

PROMOTIONAL COPY

36

Cl. (in La)

Cor. (in Fa)

Tbn.

Pfte

Arpa

Vc. 1

Vc. 2

mp

p

non arpegg.

39

Cl. (in La)

Cor. (in Fa)

Tbn.

Pfte

Arpa

Vc. 1

Vc. 2

p

mf

PROMOTIONAL COPY

42

Cl. (in La)

Cor. (in Fa)

Tbn.

Pfte

Arpa

Vc. 1

Vc. 2

45

Cl. (in La)

Cor. (in Fa)

Tbn.

Pfte

Arpa

Vc. 1

Vc. 2

PROMOTIONAL COPY

49

Cl. (in La)

Cor. (in Fa)

Tbn.

Pfte

Arpa

Vc. 1

Vc. 2

mp

mp

mp

mp

mp

mp

53

Cl. (in La)

Cor. (in Fa)

Tbn.

Pfte

Arpa

Vc. 1

Vc. 2

mf

mf

mf

poco f

mf

mf

mf

mf

PROMOTIONAL COPY

57

Cl. (in La)

Cor. (in Fa)

Tbn.

Pfte

Arpa

Vc. 1

Vc. 2

59

Cl. (in La)

Cor. (in Fa)

Tbn.

Pfte

Arpa

Vc. 1

Vc. 2

61

Cl. (in La) *mp*

Cor. (in Fa) *mp*

Tbn.

Pfte *(cresc.)*

Arpa

Vc. 1

Vc. 2

63

Cl. (in La) *p*

Cor. (in Fa) *p*

Tbn. *p*

Pfte *mp*

Arpa *mp* *p*

Vc. 1 *p*

Vc. 2 *p*

PROMOTIONAL COPY

65

Cl. (in La)

Cor. (in Fa)

Tbn.

Pfte

Arpa

Vc. 1

Vc. 2

mp

mf

mf

p

mp

mp

67

Cl. (in La)

Cor. (in Fa)

Tbn.

Pfte

Arpa

Vc. 1

Vc. 2

mp

mp

poco f

mp

mp

69

Cl. (in La) *mf* *poco f*

Cor. (in Fa) *mf* *poco f*

Tbn. *mf* *poco f*

Pfte *poco f*

Arpa *mp* *f sempre*

Vc. 1 *mf* *poco f*

Vc. 2 *mf* *poco f*

72

Cl. (in La) *f sempre*

Cor. (in Fa) *f sempre*

Tbn. *f sempre*

Pfte *f sempre*

Arpa *f sempre*

Vc. 1 *f sempre*

Vc. 2 *f sempre*

75

Cl. (in La)

Cor. (in Fa)

Tbn.

Pfte

Arpa

Vc. 1

Vc. 2

78

Cl. (in La)

Cor. (in Fa)

Tbn.

Pfte

Arpa

Vc. 1

Vc. 2

81

Cl. (in La)
Cor. (in Fa)
Tbn.
Pfte
Arpa
Vc. 1
Vc. 2

84

Cl. (in La)
Cor. (in Fa)
Tbn.
Pfte
Arpa
Vc. 1
Vc. 2

PROMOTIONAL COPY

86

Cl. (in La)

Cor. (in Fa)

Tbn.

Pfte

Arpa

Vc. 1

Vc. 2

ppp

mfp

ppp

mfp

ppp

mfp

poco f

p

mp

p

mf

p

mp

mf

mf

mf

3

6

6

6

6

88

Cl. (in La)

Cor. (in Fa)

Tbn.

Pfte

Arpa

Vc. 1

Vc. 2

poco f

ppp

poco f

ppp

ppp

poco fp

poco f

mf

poco f

mp

poco f

p

poco fp

3

89

Cl. (in La)

Cor. (in Fa)

Tbn.

Pfte

Arpa

Vc. 1

Vc. 2

poco fp

f

poco f

f

poco f

f

poco f

f

3

6

6

5

accel.

91

Cl. (in La)

Cor. (in Fa)

Tbn.

Pfte

Arpa

Vc. 1

Vc. 2

fp

fp

fp

fp

8^{vb}-----

8^{vb}-----

8^{vb}-----

PROMOTIONAL COPY

♩ = 152 c.

94

Cl. (in La)

Cor. (in Fa)

Tbn.

Pfte

Arpa

Vc. 1

Vc. 2

f *ppp* *poco f*

f *ppp* *poco f*

f *ppp* *mf*

mf

mf

p sempre

p sempre

97

Cl. (in La)

Cor. (in Fa)

Tbn.

Pfte

Arpa

Vc. 1

Vc. 2

ppp *mf* *ppp*

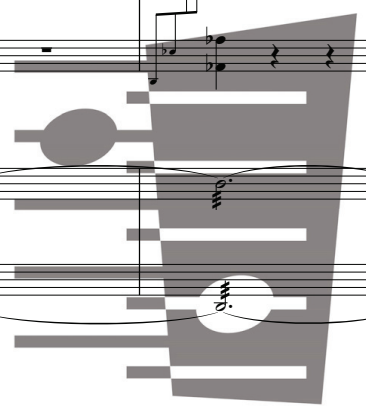
ppp *mf* *ppp*

ppp *p* *ppp* *p*

poco f

poco f

PROMOTIONAL COPY



102

Cl. (in La)

Cor. (in Fa)

Tbn.

Pfte

Arpa

Vc. 1

Vc. 2

mp *ppp* *p* *ppp*

mp *ppp* *p* *ppp*

ppp *p > ppp*

f

poco f *f* *mf* *f* *mp*

108

Cl. (in La)

Cor. (in Fa)

Tbn.

Pfte

Arpa

Vc. 1

Vc. 2

poco f *mf*

f *mf* *mf* *poco f* *mp* *poco f* *p* *poco f* *mp* *p* *mf* *pp*

PROMOTIONAL COPY

rit.

♩ = 128 c.

115

Cl. (in La) *p*

Cor. (in Fa) *p* chiuso

Tbn. *p* con sord.

Pfte *mp* *pp* legato

Arpa *mf* *p* *pp* *mp* *pp*

Vc. 1 *mp*

Vc. 2 *mp*

119

Cl. (in La)

Cor. (in Fa)

Tbn.

Pfte *pp* *8va*

Arpa *p* *pp* *mp* *pp*

Vc. 1 *p*

Vc. 2 *p*

121

Cl. (in La)
 Cor. (in Fa)
 Tbn.
 Pfte
 Arpa
 Vc. 1
 Vc. 2

124

Cl. (in La)
 Cor. (in Fa)
 Tbn.
 Pfte
 Arpa
 Vc. 1
 Vc. 2

126

Cl. (in La)
Cor. (in Fa)
Tbn.

Pfte

Arpa

Vc. 1
Vc. 2

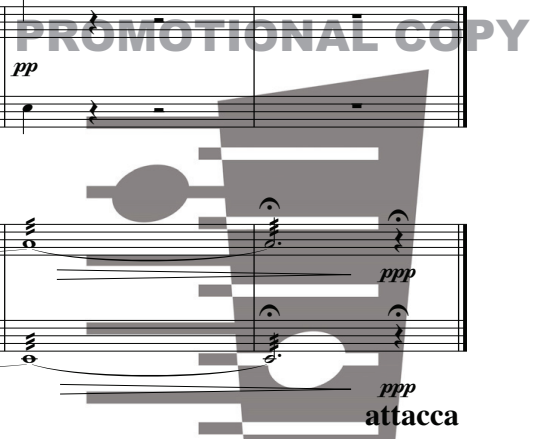
130

Cl. (in La)
Cor. (in Fa)
Tbn.

Pfte

Arpa

Vc. 1
Vc. 2



2. (Harha)

$\text{♩} = 56 \text{ c.}$
muta in Cl. in Sib

Cl. (in La)

Vc. 1

Vc. 2

p *pp* *mp* *p*

mp *p* *mp*

7

Vc. 1

Vc. 2

mp *mf* *poco f*

mp *mf* *poco f*

12

Vc. 1

Vc. 2

poco fp *f* *poco f*

poco fp *f*

15

Vc. 1

Vc. 2

poco f *non dim.* *mf* *mp*

poco f *non dim.* *mf* *mp*

22

Vc. 1

Vc. 2

mp *p* *pp*

mp *p* *pp* *sul tasto*

PROMOTIONAL COPY

29 ♩ = ♩ = 112 c.
non arpegg.

Arpa *pp sempre*

Vc. 1 *ppp* *pp* *ppp* *pp* *ppp*

Vc. 2 *ppp* *pp* *ppp* *pp* *ppp*

ord.

35

Pfte *pp sempre*

Arpa

Vc. 1 *pp* *ppp* *pp* *ppp*

Vc. 2 *pp* *ppp* *pp* *ppp*

39

Cor. (in Fa) *pp* *aperto*

Pfte

Arpa

Vc. 1 *pp* *ppp* *pp* *ppp*

Vc. 2 *pp* *ppp* *pp* *ppp*

43

Cl. (in Sib)

Cor. (in Fa)

Tbn.

Pfte

Arpa

Vc. 1

Vc. 2

47

Cl. (in Sib)

Cor. (in Fa)

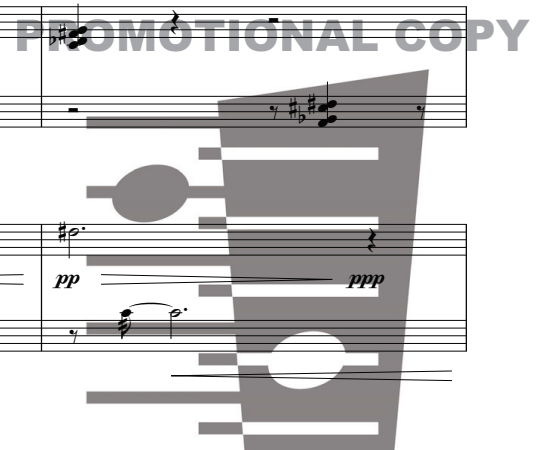
Tbn.

Pfte

Arpa

Vc. 1

Vc. 2



50

Cl. (in Sib)

Cor. (in Fa)

Tbn.

Pfte

Arpa

Vc. 1

Vc. 2

ppp

pp

p

ppp

pp

ppp

pp

ppp

pp

ppp

54

Cl. (in Sib)

Cor. (in Fa)

Tbn.

Pfte

Arpa

Vc. 1

Vc. 2

mp

ppp

p

ppp

pp

ppp

ppp

pp

ppp

pp

ppp

pp

ppp

PROMOTIONAL COPY



58

Cl. (in Sib)

Cor. (in Fa)

Tbn.

Pfte

Arpa

Vc. 1

Vc. 2

pp *mp* *p* *ppp*

62

Cl. (in Sib)

Cor. (in Fa)

Tbn.

Pfte

Arpa

Vc. 1

Vc. 2

ppp *pp* *p* *ppp*

66

Cl. (in Sib)

Cor. (in Fa)

Tbn.

Pfte

Arpa

Vc. 1

Vc. 2

p *ppp* *pp* *p*

ppp *pp* *p*

ppp *ppp* *p* *ppp*

pp *ppp* *p* *ppp*

poco pont.

poco pont.

70

Cl. (in Sib)

Cor. (in Fa)

Tbn.

Pfte

Arpa

Vc. 1

Vc. 2

mp *ppp* *ppp* *pp*

ppp *ppp* *pp*

ppp *ppp* *p* *ppp*

p *ppp* *p* *ppp*

73

Cl. (in Sib)

Cor. (in Fa)

Tbn.

Pfte

Arpa

Vc. 1

Vc. 2

ppp *pp* *mp* *p* *ppp* *p* *ppp*

76

Cl. (in Sib)

Cor. (in Fa)

Tbn.

Pfte

Arpa

Vc. 1

Vc. 2

p *ppp* *pp* *ppp* *p* *ppp*



79

Cl. (in Sib)

Cor. (in Fa)

Tbn.

Pfte

Arpa

Vc. 1

Vc. 2

mp

p

ppp

p

ppp

p

ppp

p

ppp

82

Cl. (in Sib)

Cor. (in Fa)

Tbn.

Pfte

Arpa

Vc. 1

Vc. 2

ppp

pp

p

ppp

ppp

p

ppp

p

ppp

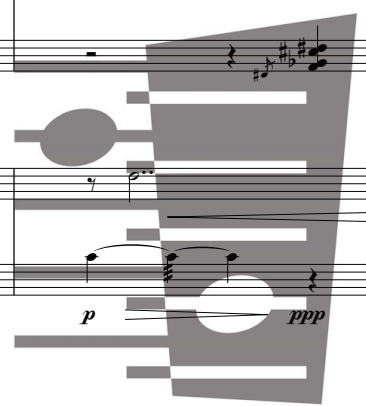
p

ppp

p

ppp

PROMOTIONAL COPY



85

Cl. (in Sib)

Cor. (in Fa)

Tbn.

Pfte

Arpa

Vc. 1

Vc. 2

88

Cl. (in Sib)

Cor. (in Fa)

Tbn.

Pfte

Arpa

Vc. 1

Vc. 2

91

Cl. (in Sib)

Cor. (in Fa)

Tbn.

Pfte

Arpa

Vc. 1

Vc. 2

p *ppp* *ppp* *p* *ppp*

ppp *pp* *p* *ppp*

94

Cl. (in Sib)

Cor. (in Fa)

Tbn.

Pfte

Arpa

Vc. 1

Vc. 2

p *ppp* *mp* *p* *ppp*

p *ppp* *ppp* *ppp* *ppp*

p *ppp* *mp* *ppp* *ppp*

sul pont. *mp* *ppp* *ppp* *ppp*

p *ppp* *mp* *ppp* *ppp*

97

Cl. (in Sib)

Cor. (in Fa)

Tbn.

Pfte

Arpa

Vc. 1

Vc. 2

ppp *pp* *p*

pp *ppp* *p*

mp *ppp* *mp* *ppp*

mp *ppp* *mp* *ppp*

poco ten.

100

Cl. (in Sib)

Cor. (in Fa)

Tbn.

Pfte

Arpa

Vc. 1

Vc. 2

mp *p* *pp*

ppp *pp*

ppp *pp*

mp *ppp* *mp* *ppp*

mp *ppp* *mp* *ppp*

a tempo

103

Cl. (in Sib)

Cor. (in Fa)

Tbn.

Pfte

Arpa

Vc. 1

Vc. 2

ppp pp

p

p

mp

ppp

mp

ppp

mp

ppp

106

Cl. (in Sib)

Cor. (in Fa)

Tbn.

Pfte

Arpa

Vc. 1

Vc. 2

ppp

pp

pp

ppp

pp

ppp

mp

ppp

mp

ppp

mp

ppp

109

Cl. (in Sib)

Cor. (in Fa)

Tbn.

Pfte

Arpa

Vc. 1

Vc. 2

112

Cl. (in Sib)

Cor. (in Fa)

Tbn.

Pfte

Arpa

Vc. 1

Vc. 2

115

Cl. (in Sib)

Cor. (in Fa)

Tbn.

Pfte

Arpa

Vc. 1

Vc. 2

mp *p* *ppp* *pp* *mp* *ppp* *mp* *ppp* *mp* *ppp*

118

Cl. (in Sib)

Cor. (in Fa)

Tbn.

Pfte

Arpa

Vc. 1

Vc. 2

ppp *pp* *p* *mp* *ppp* *ppp* *mp* *ppp* *mp* *ppp*



121

Cl. (in Sib)

Cor. (in Fa)

Tbn.

Pfte

Arpa

Vc. 1

Vc. 2

ppp

pp

ppp

pp

mp

ppp

mp

ppp

mp

ppp

mp

ppp

124

Cl. (in Sib)

Cor. (in Fa)

Tbn.

Pfte

Arpa

Vc. 1

Vc. 2

mp

p

ppp

p

ppp

mp

p

mp

ppp

mp

ppp

mp

ppp

mp

ppp

mp

ppp



127

Cl. (in Sib)

Cor. (in Fa)

Tbn.

Pfte

Arpa

Vc. 1

Vc. 2

130

Cl. (in Sib)

Cor. (in Fa)

Tbn.

Pfte

Arpa

Vc. 1

Vc. 2



133

Cl. (in Sib)

Cor. (in Fa)

Tbn.

Pfte

Arpa

Vc. 1

Vc. 2

136

Cl. (in Sib)

Cor. (in Fa)

Tbn.

Pfte

Arpa

Vc. 1

Vc. 2



139

Cl. (in Sib)

Cor. (in Fa)

Tbn.

Pfte

Arpa

Vc. 1

Vc. 2

142

Cl. (in Sib)

Cor. (in Fa)

Tbn.

Pfte

Arpa

Vc. 1

Vc. 2



146

Cl. (in Sib)

Cor. (in Fa)

Tbn.

Pfte

Arpa

Vc. 1

Vc. 2

p *mp* *p* *ppp* *ppp* *p* *ppp*

ten.

a tempo

149

Cl. (in Sib)

Cor. (in Fa)

Tbn.

Pfte

Arpa

Vc. 1

Vc. 2

pp *mfp* *mp* *p* *ppp* *p* *ppp*



152 *ppp* muta in Cl. basso in Sib

Cl. (in Sib)

Cor. (in Fa)

Tbn.

Pfte

Arpa

Vc. 1

Vc. 2

p *ppp* *p* *ppp* *p* *ppp*

158

Arpa

Vc. 1

Vc. 2

pp

164

Vc. 1

Vc. 2

attacca

PROMOTIONAL COPY

3. (Tahto)

$\text{♩} = 128 \text{ c.}$

Cor. (in Fa)

Tbn.

Pfte

Arpa

Vc. 1

Vc. 2

mf *f* *mf* *f* *mf*

f

pizz. ϕ

pizz. ϕ

6

Cor. (in Fa)

Tbn.

Pfte

Arpa

Vc. 1

Vc. 2

f

fp *fp*

poco arpegg. *poco f*

arco (sul G) *mf* *ppp*

arco *mf* *ppp*

11

Cl. basso (in Sib)

Cor. (in Fa)

Tbn.

Vc. 1

Vc. 2

mp *mf* *ppp* *mp* *mf* *pp*

ppp

fp *fp*

p *mf* *pp*

15

Cl. basso (in Sib)

Tbn.

Vc. 1

Vc. 2

mp *mf* *p* *mp* *mf* *mp* *mp*

mf *ppp*

mp *mf* *p* *mp* *mf* *mp*

mp *mf* *p* *mp* *mf*

18

Cl. basso (in Sib)

Vc. 1

Vc. 2

mf *mp* *mf* *mp* *mf* *mp*

mp *mf* *mp* *mf* *mp* *mf* *mp*

mp *mp* *mf* *mp* *mf* *mp*

21

Cl. basso (in Sib)

Vc. 1

Vc. 2

f *fp*

marc. *f*

marc. *f*

25

Cl. basso (in Sib)

Cor. (in Fa)

Tbn.

Pfte

Arpa

Vc. 1

Vc. 2

f

ppp

p
(quasi pizz.)

mp

pp

p

pp

p

pp

p

pizz.

arco *v*

pizz.

p
(arco)

pp

p

pp

p

mp

pp

p

mp

31

Cl. basso (in Sib)

Cor. (in Fa)

Tbn.

Pfte

Arpa

Vc. 1

Vc. 2

mp

mf

mf

mp

p

mp

mf

mp

mf

p

mp

mf

mp

mf

pizz.

arco

mf

mp

mf

p

mp

mf

mp

mf

37

Cl. basso (in Sib)

Cor. (in Fa)

Tbn.

Pfte

Arpa

Vc. 1

Vc. 2

poco f

f

mf

poco f

f

pizz.

arco

poco f

mf

poco f

f

arco

pizz.

poco f

f

43

Cl. basso (in Sib)

Cor. (in Fa)

Tbn.

Pfte

Arpa

Vc. 1

Vc. 2

f

ff

ff

f

poco f

f

ff

f

ff

flz.

ff

arco

poco f

f

ff

f

ff

arco

pizz.

ff

f

ff

pizz.

ff

arco

pizz.

ff

PROMOTIONAL COPY



49

muta in Cl.

Cl. basso (in Sib)

Cor. (in Fa)

Tbn.

Pfte

Arpa

Vc. 1

Vc. 2

ppp

poco f

f

ffp

f

ff

f

pp

f

f

ff

poco f

f

f

6 7 9

3 6

9 10

52

Cl. basso (in Sib)

Cor. (in Fa)

Tbn.

Pfte

Arpa

Vc. 1

Vc. 2

poco f

f

ffp

f

ff

f

pp

f

f

ff

poco f

f

f

f

arco v

6 7 9

3 3

9 10

55

Cl. in Sib
Cor. (in Fa)
Tbn.
Pfte
Arpa
Vc. 1
Vc. 2

mf
ff
ffp
ff
P
ff
ff
ff

3
5
7
10
6
7
10
11

8^{va}

57

Cl. in Sib
Cor. (in Fa)
Tbn.
Pfte
Arpa
Vc. 1
Vc. 2

ffp
ff
ff
ff
mf
ff
ff
ff
ff
pizz. ϕ
ff
ff
ff
poco f
poco f
poco f

3
3
3

poco f

PROMOTIONAL COPY

59

Cl. (in Sib)

Cor. (in Fa)

Tbn.

Pfte

Arpa

Vc. 1

Vc. 2

ffp

sfzp

ff

mp

ff

mp

ff

mp

ff

mp

61

Cl. (in Sib)

Cor. (in Fa)

Tbn.

Pfte

Arpa

Vc. 1

Vc. 2

rit. poco a poco

fff

ff

fff

ppp

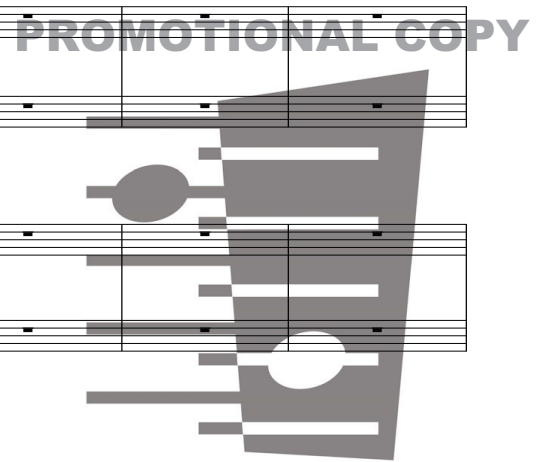
fff

fff

fff

fff

fff



67 $\text{♩} = 76 \text{ c.}$

Cl. (in Sib)

mp *poco f* *p*

Doppio movimento

73 $\text{♩} = 152 \text{ c.}$

Cl. (in Sib)

pp *ppp*

Arpa

p

Vc. 1

p sempre punta d'arco

Vc. 2

p sempre punta d'arco

76

Cl. (in Sib)

mp *mf*

Cor. (in Fa)

p *mf* *ppp*

Tbn.

mf *ppp* con sord.

Pfte

mf

Arpa

mf

Vc. 1

Vc. 2

PROMOTIONAL COPY



79

Cl. (in Sib)

Cor. (in Fa)

Tbn.

Pfte

Arpa

Vc. 1

Vc. 2

ppp

p sempre

p sempre

82

Cl. (in Sib)

Cor. (in Fa)

Tbn.

Pfte

Arpa

Vc. 1

Vc. 2

PROMOTIONAL COPY

85

Cl. (in Sib)

Cor. (in Fa)

Tbn.

Pfte

Arpa

Vc. 1

Vc. 2

89

Cl. (in Sib)

Cor. (in Fa)

Tbn.

Pfte

Arpa

Vc. 1

Vc. 2

93

Cl. (in Sib)

Cor. (in Fa)

Tbn.

Pfte

Arpa

Vc. 1

Vc. 2

96

Cl. (in Sib)

Cor. (in Fa)

Tbn.

Pfte

Arpa

Vc. 1

Vc. 2

chiuso

pp

pp

PROMOTIONAL COPY