

Sampsa Ertamo

# Valaan muotokuva

Portrait of a Whale  
for viora da gamba and tape

2003



**Music Finland**

Copyright © by the Composer

All Rights Reserved

tion may be copied  
m or by any means  
on of the composer



# SAMPSA ERTAMO

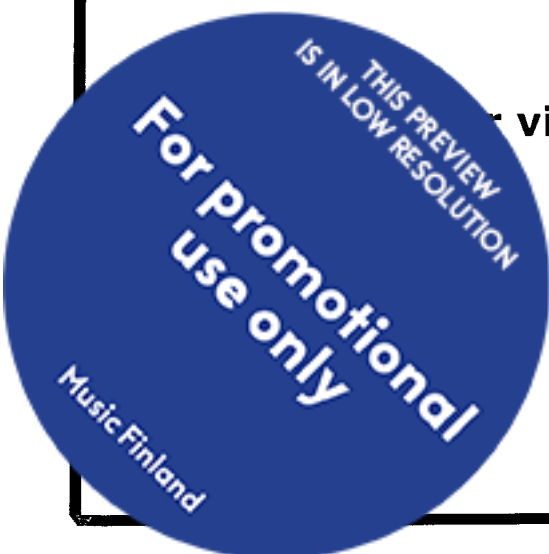
## Valaan muotokuva

*Portrait of a Whale*

(2003)

viola da gamba and tape

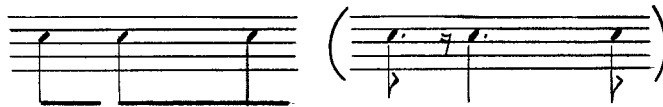
Duration: 11'34"



## Notation

Sampsa Ertamo: Valaan muotokuva (*Portrait of a Whale*)

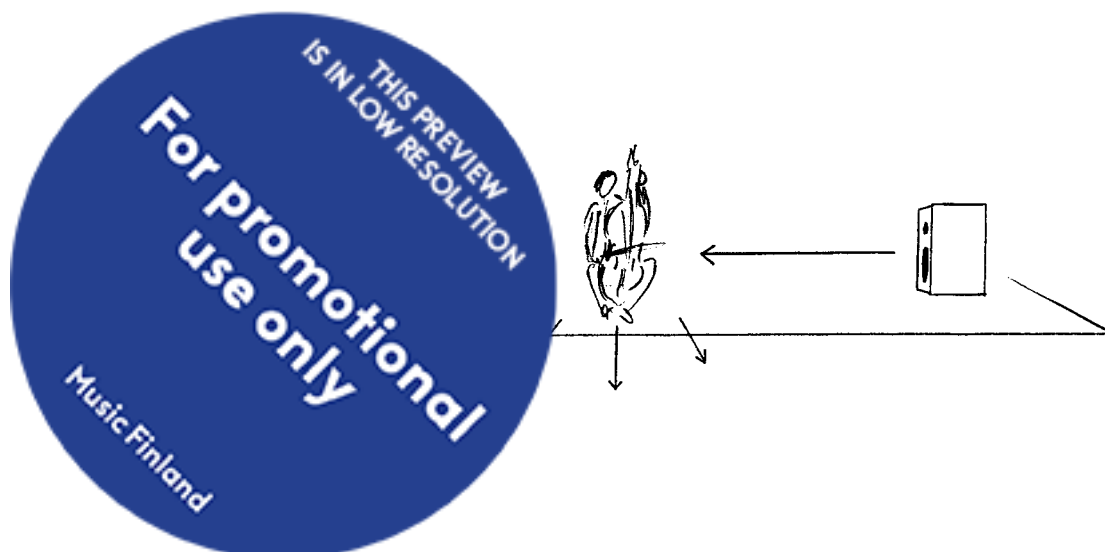
There is no time signature or tempi in this piece. The speed of music and playing is totally dependent on the tape-part. The passage of time is shown at the beginning of every system (like bar numbers). The duration of a system is always 30 seconds. I haven't marked other seconds because gamba-player has to follow tape-part and not some time markings. Because the time goes steadily in the score the rhythms of the gamba-part are shown optically. Here and there is a vertical line indicating when to begin or conclude a passage. This clarifies also the speed of playing one. In any case it is obvious that gamba-player must know thoroughly the tape/cd-part. In this score the beam indicates the length of a note. It shows also if there is a break or not between the notes. See example:



The gamba-part is to be played with 'baroque-tuning'. Basically all notes are 'in B'. The tuning should be: A = 415. (One can make improvements on the tuning by listening the tape-part.) To make the score clearer and more easy to see chords and unisonos I have notated the tape-part also 'in B' / A = 415. Gamba should be a 7-string instrument and tuned (these are written notes):



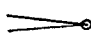
Both parts should have equal audibility and importance. Loudspeakers and gamba should be on stage as a well-balanced duo. The setting of volume for the tape-part should be supporting this view. However setting should not be changed during the performance. It depends on location how the loudspeakers should be placed. In any case I would prefer not to have the sounds moving in space. I would like the sounds of both parts equally fill up the place or come from one spot. One way of placing the loudspeakers could be as follows:

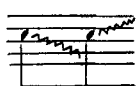


‡ note raised a 1/4 tone

‡ note lowered a 1/4 tone

 crescendo dal niente

 diminuendo al niente



Glissando con vibrato, with a trembling sound

(Normal glissandi should be done always in a way that the frets would not be heard.)

ric.



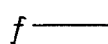
Because of length of the note ricochet can be played:



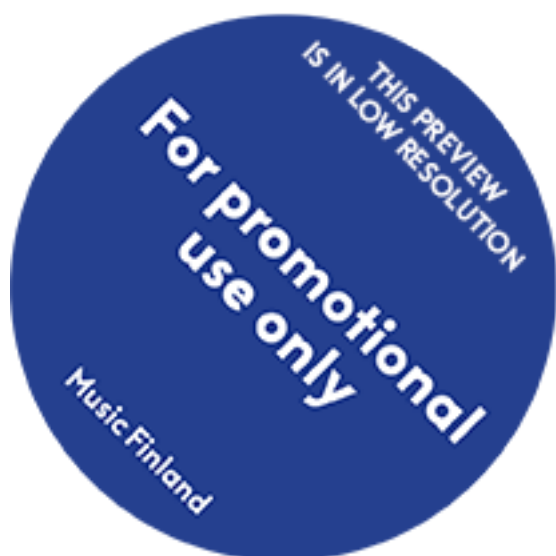
Two-finger vibrato.



Same notes two or three times.



Keep the volume steady.



# Valaan muotokuva

## Portrait of a Whale

Sampsa Ertamo

2003

0"

CD  
Tape  
(mono)

Gamba

non vibr. gliss. pp < p l.v.

30"

1 2 3 4 5 6 7 8 9 10 11

pizz. (b2) p

1'

Raccontando arco ten. rapido ten.

P < mf poco P mf PPP mp mf mf f f

1'30"

p poco P mp PP

THIS PREVIEW IS IN LOW RESOLUTION  
For promotional use only  
Music Finland

2'

*poco a poco più provocando al \**

vibr.

mp

mp poco

mp poco

vibr.

2'30"

mf vibr. poco

f

mf mp mf <f

ric. \*

3'

mf mp

mf poco

f

rapidamente

gliss!

poco

3'30"

mf

f

spicc.

poco f rapido f mf

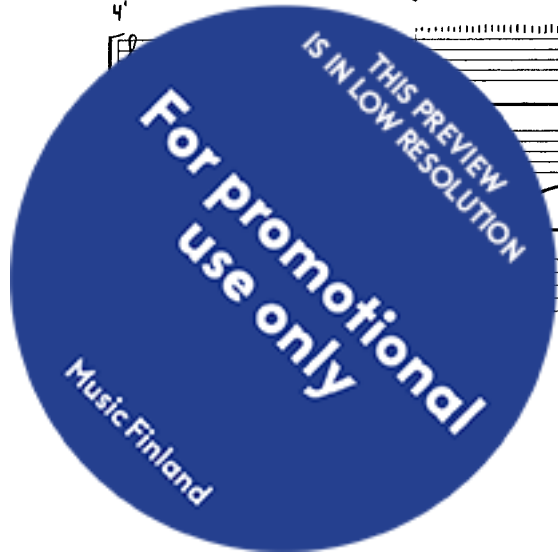
*poco a poco più agitato al \**

ten.

4'

mf mp f

ric.



4'30"

ric. mf f poco cresc. ric. ten. rapido mf Unisano (shape of the glissandi!) ric.

5'

grazioso mp poco mf p

5'30"

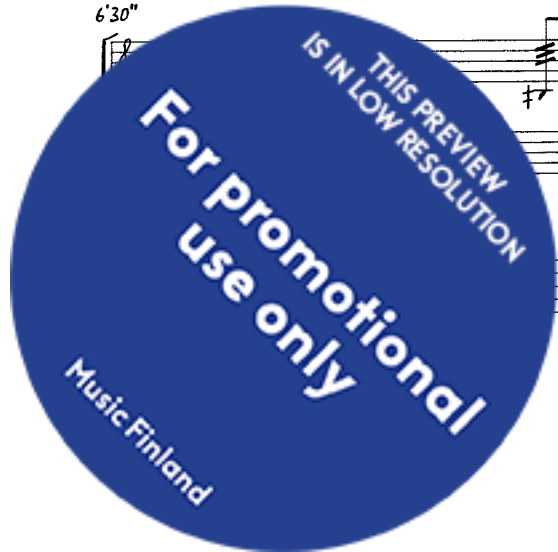
mp poco rapido mp p mf

6'

mp mf poco p mf

6'30"

(dr) mf ric.





7'

ric. (dr) cantabile vibr.

This system contains the first two staves of music. The first staff has a treble clef and a key signature of one sharp (F#). It begins with a dynamic marking of *f* and a tempo marking of *ric.* (ritardando). A slur covers the first two measures, with *(dr)* written below. The second staff has a bass clef and a key signature of one sharp. It begins with a dynamic marking of *f* and a tempo marking of *ric.*. A slur covers the first two measures, with *(dr)* written below. The tempo then changes to *cantabile*. A slur covers the next two measures, with *p* written below. The system ends with a dynamic marking of *f* and a tempo marking of *vibr.* (vibrato).

7'30"

*poco* *p* *vibr.*

This system contains the next two staves of music. The first staff has a treble clef and a key signature of one sharp. It begins with a dynamic marking of *f* and a tempo marking of *poco*. A slur covers the first two measures, with *p* written below. The second staff has a bass clef and a key signature of one sharp. It begins with a dynamic marking of *f* and a tempo marking of *poco*. A slur covers the first two measures, with *p* written below. The system ends with a dynamic marking of *f* and a tempo marking of *vibr.*

(Gamba always same loudness as Tape)

8'

*vibr.* *poco*

This system contains the next two staves of music. The first staff has a treble clef and a key signature of one sharp. It begins with a dynamic marking of *f* and a tempo marking of *vibr.*. A slur covers the first two measures, with *poco* written below. The second staff has a bass clef and a key signature of one sharp. It begins with a dynamic marking of *f* and a tempo marking of *vibr.*. A slur covers the first two measures, with *poco* written below. The system ends with a dynamic marking of *f* and a tempo marking of *poco*.

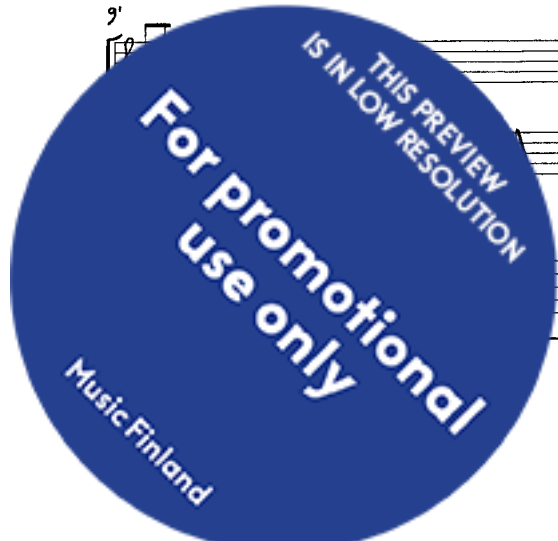
8'30"

*pp* *p* *pp*

This system contains the next two staves of music. The first staff has a treble clef and a key signature of one sharp. It begins with a dynamic marking of *f* and a tempo marking of *pp*. A slur covers the first two measures, with *p* written below. The second staff has a bass clef and a key signature of one sharp. It begins with a dynamic marking of *f* and a tempo marking of *pp*. A slur covers the first two measures, with *p* written below. The system ends with a dynamic marking of *f* and a tempo marking of *pp*.

9'

This system contains the final two staves of music. The first staff has a treble clef and a key signature of one sharp. It begins with a dynamic marking of *f* and a tempo marking of *pp*. A slur covers the first two measures, with *p* written below. The second staff has a bass clef and a key signature of one sharp. It begins with a dynamic marking of *f* and a tempo marking of *pp*. A slur covers the first two measures, with *p* written below. The system ends with a dynamic marking of *f* and a tempo marking of *pp*.



9'30"

Musical score for the first system, starting at 9'30". It consists of three staves (treble, alto, and bass clefs). The music features a melodic line in the treble clef and a more active line in the bass clef. A *ppp* dynamic marking is present below the first staff.

*ppp*

10'

Musical score for the second system, starting at 10'. It consists of three staves. The music continues with similar melodic and harmonic textures as the first system.

10'30"

Musical score for the third system, starting at 10'30". It consists of three staves. The music features a melodic line in the treble clef and a more active line in the bass clef. A *pp* dynamic marking is present below the first staff.

*poco pp*

*poco ppp*

*sempre poco dim.*

11'

Musical score for the fourth system, starting at 11'. It consists of three staves. The music features a melodic line in the treble clef and a more active line in the bass clef. A *non l.v.* marking is present below the first staff.

*non l.v.*



15.7.2003

*Sampo*  
*Kotivuori*