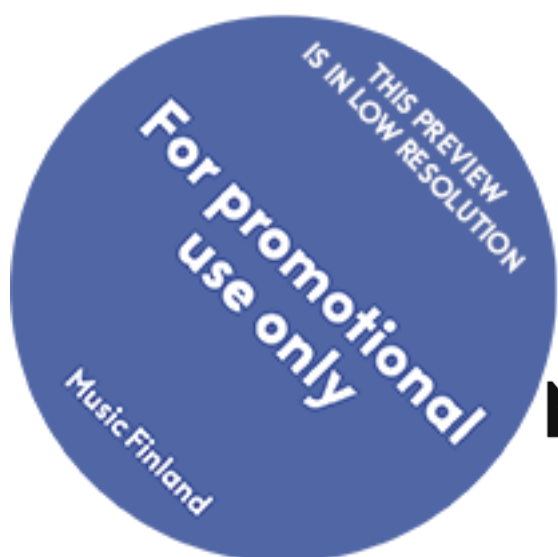


Juhani Nuorvala

Ruoikkohuilu

Version for flute and electronics

2014



Music Finland

Copyright © by the Composer

All Rights Reserved

No part of this publication may be copied
or reproduced in any form or by any means
without the prior permission of the composer

Distribution:
Music Finland
Music Library
Urho Kekkosen katu 2 C, 2nd floor
FI-00100 Helsinki
Finland

musiclibrary@musicfinland.fi
www.musicfinland.fi

Helsinki, 2016



Ruoikkohuulu

"Flute of the Seaside Reeds"

Tuning:

The cent values indicate (approximate) deviations from equal-tempered pitches when the tuning pitch is A (+/- 0 cents, i.e. no deviation). C7 will then be 33 cents, or 1/6 tone, flat from equal-tempered C, F# (just major third of the drone, D) 16 cents, or 1/12 tone, flat from equal-tempered F# etc.

D [alto flute in G: written G] = 1/1 -2 cents
Eb13 [Ab13] = 13/12 (accidental: '13' sign and b) +37 cents
E [A] = 9/8 +2 cents
F [Bb] = 6/5 +14 cents
F13 [Bb13] = 39/32 ('13' sign [and b]) +41 cents (the '13' sign sharpens by 27 cents)
F# [B] = 5/4 -16 cents
G [C] = 4/3 -4 cents
G+ [C+] = 11/8 ('quarter-tone sharp' sign) +49 cents
G# [C#] = 45/32 -12 cents
A [D] = 3/2 +/-0 cents
Bb [Eb] = 8/5 +12 cents
Bb13 [Eb13] = 13/8 ('13' sign and b) +39 cents
B [E] = 5/3 -18 cents
C7 [F7] = 7/4 ('7' sign) -33 cents
C# [F#] = 15/8 -14 cents

Thus:

chains of pure fifths (3/2): G-D-A-E ; Eb13-Bb13-F13 ; Bb-F ; B-F#-C#-G#

not pure fifth: E-B

just major thirds (5/4, 386 cents): Bb-D-F# ; E-G# ; F-A-C# ; G-B ;

just minor thirds (6/5, 316 cents): B-D-F ; F#-A ; G-Bb ; C#-E

[alto flute, written pitches:

Chains of pure fifths (3/2): C-G-D-A ; Ab13-Eb13-Bb13 ; Eb-Bb ; E-B-F#-C#

Not pure fifth: A-E

Just major thirds (5/4, 386 cents): Eb-G-B ; A-C# ; Bb-D-F# ; C-E ;

Just minor thirds (6/5, 316 cents): E-G-Bb ; B-D ; C-Eb ; F#-A]

The *ad libitum* sections, marked with a dotted line, are to be played very freely. Improvisation is allowed, and the bars may be repeated or omitted at will. These sections can take longer than the notation suggests. Long pauses between playing are possible.

The bars that are not marked with a dotted line are to be played as written (rubato is allowed, of course) and they should stand out as soloistic in comparison with the subdued *ad lib* section.

The performance should start with the electronic part. The flutist should begin imperceptibly, preferably playing soft whistle tones at first, and then moving on to air sounds and finally to long tones with gradually clearer pitch.



Ruoikkohuulu

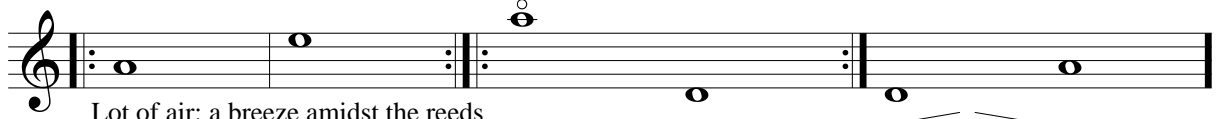
(Flute of the Seaside Reeds)

Juhani Nuorvala

Airily, tranquilly, freely

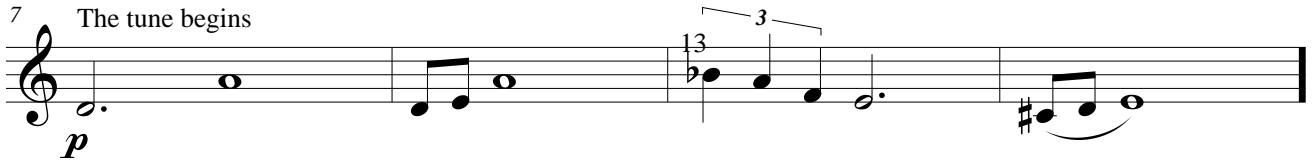
Ad lib.

Flute



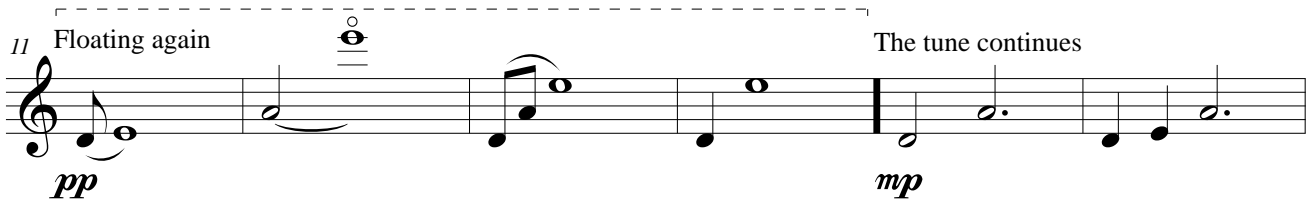
Lot of air: a breeze amidst the reeds

ppp



The tune begins

p

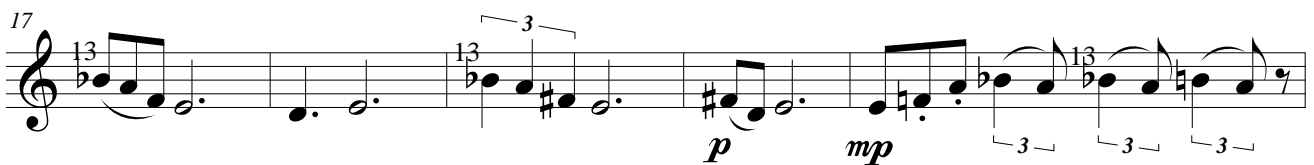


Floating again

The tune continues

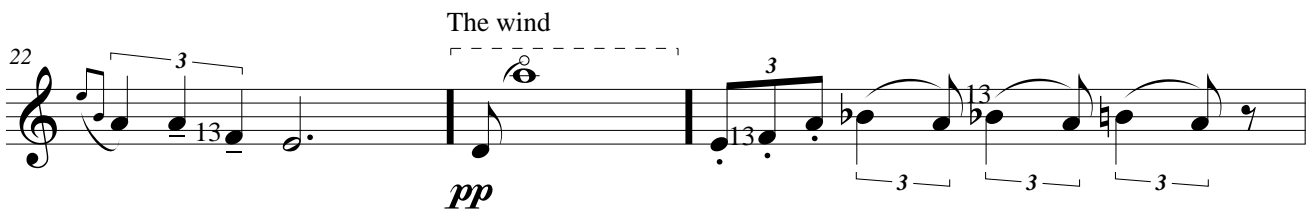
pp

mp



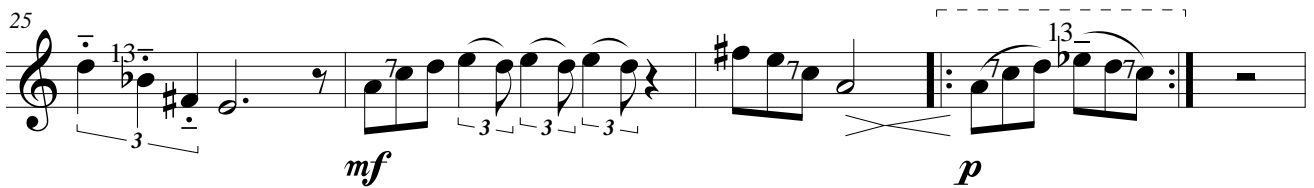
p

mp



The wind

pp



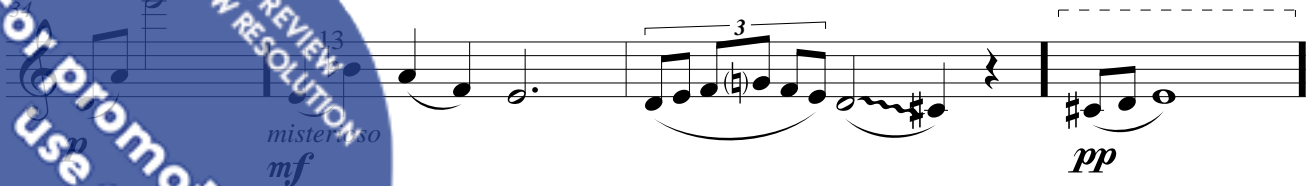
mf

p



f

A new motif



mf

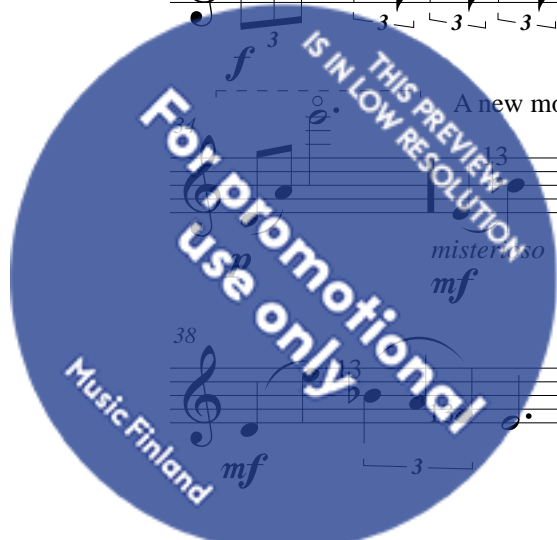
pp



p

p

f



Singingly

41

Proudly

45

49

Emotively

54

58

Expressionlessly conjuring up

62

Disappearing into the wind, waning

63

