

Leonid Bashmakov

Misimidolalae

for kantele

2001



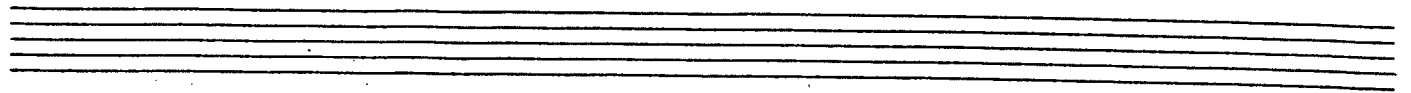
Music Finland

Copyright © by the Composer

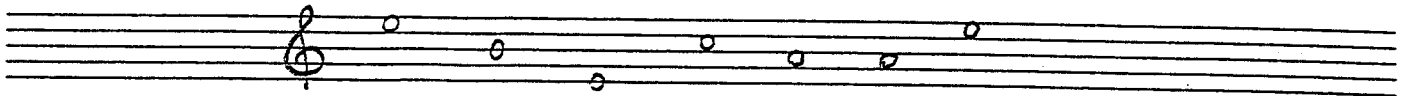
All Rights Reserved

tion may be copied
m or by any means
on of the composer





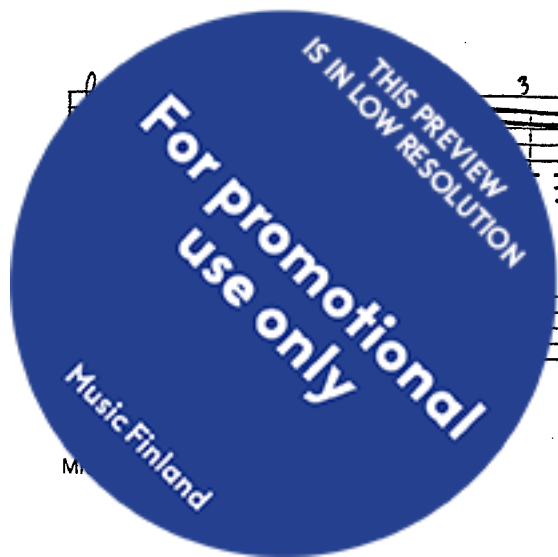
M I S I M I D O L A L A E



ANDANTE $\text{♩} = 60$

lasc. vibr.
p
mp
mf
d#, gb

mf
gh



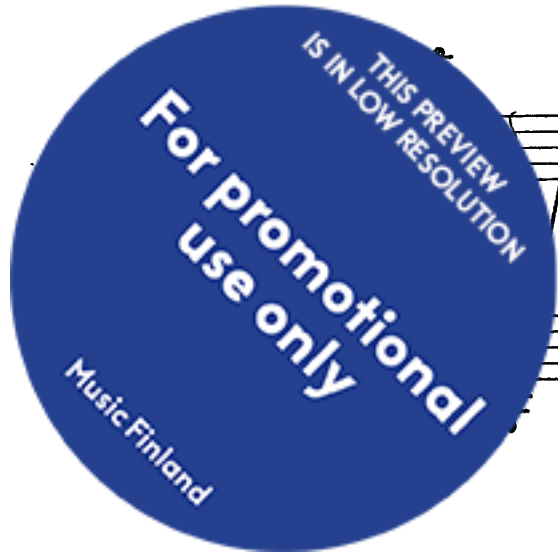
Handwritten musical score, first system. Treble clef, piano (*p*). Chords are marked with 'M' and boxed notes with 'g#' and 'g'.

Handwritten musical score, second system. Treble clef. Chords are marked with 'M' and boxed notes with 'g' and 'b'.

Handwritten musical score, third system. Treble clef. Dynamics include *mf* and *f*. Features a melodic line in the bass clef.

Handwritten musical score, fourth system. Treble clef. Includes a slur over a melodic line and the instruction *l.vibr.*. Chords are marked with 'M' and boxed notes with 'g' and 'b'.

Handwritten musical score, fifth system. Treble clef. Chords are marked with 'M' and boxed notes with 'g' and 'b'.



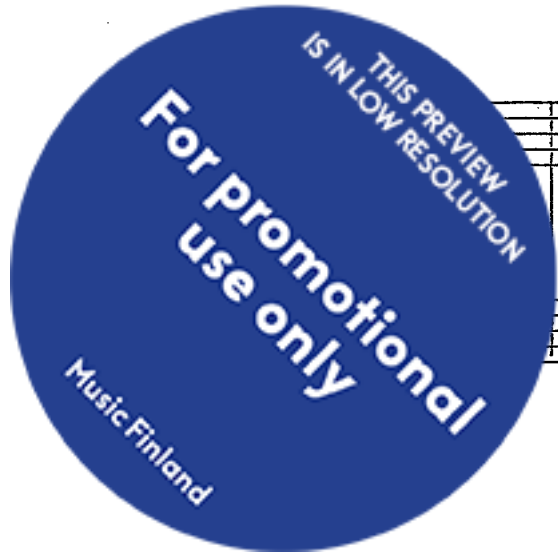
Handwritten musical notation for the first system, featuring treble and bass staves with various notes, rests, and dynamic markings like accents and slurs.

Handwritten musical notation for the second system, including dynamic markings such as "dim.", "p.", "a", and "p.", and slurs over the notes.

Handwritten musical notation for the third system, showing notes and rests with dynamic markings like "p" and "M".

Handwritten musical notation for the fourth system, featuring notes, rests, and dynamic markings like "p".

Handwritten musical notation for the fifth system, showing notes and rests with dynamic markings like "pp".





L A E D O

o o

