

Olavi Pesonen

Suite ancienne

for orchestra

1978



Music Finland

Copyright © by the Composer

A

may be copied
by any means
of the composer

THIS PREVIEW
IS IN LOW RESOLUTION

For promotional
use only

Music Finland

3495

Meinem Freund Musikdirektor
Klaus-Dieter Demmler gewidmet

Olavi Pesonen

Suite ancienne

1. Prélude

2. Sarabande

3. Rigaudon

4. Air

5. Gigue



2
Prelude

$\text{♩} = 92$

2 Flauti C

2 Oboi C $a2$

2 Clarinetti C f $a2$
in B

2 Fagotti C f $a2$

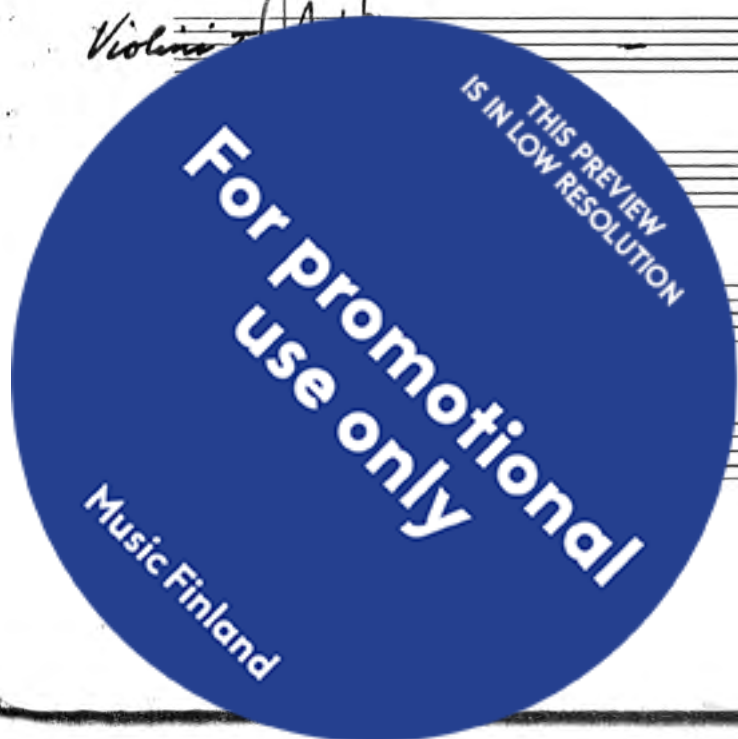
2 Corni C
in F

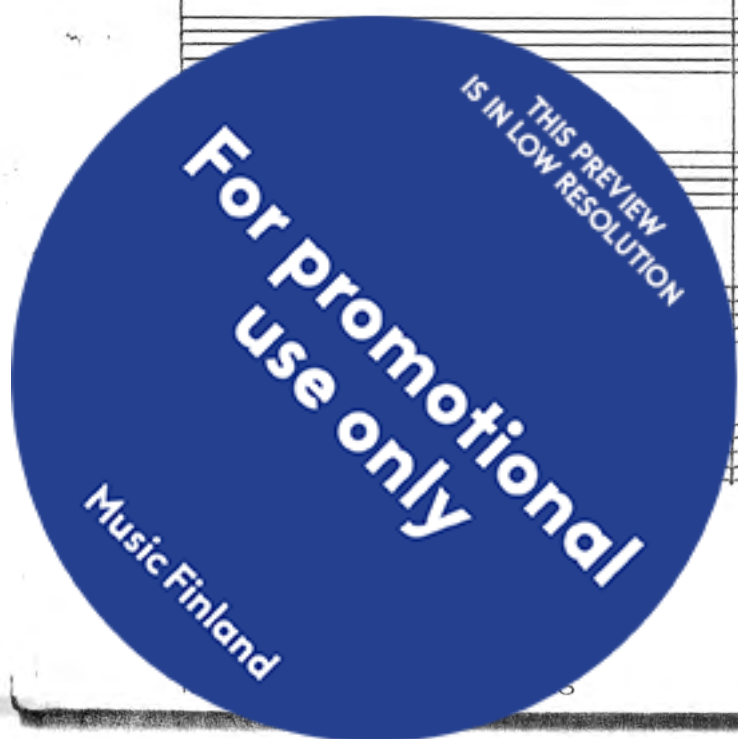
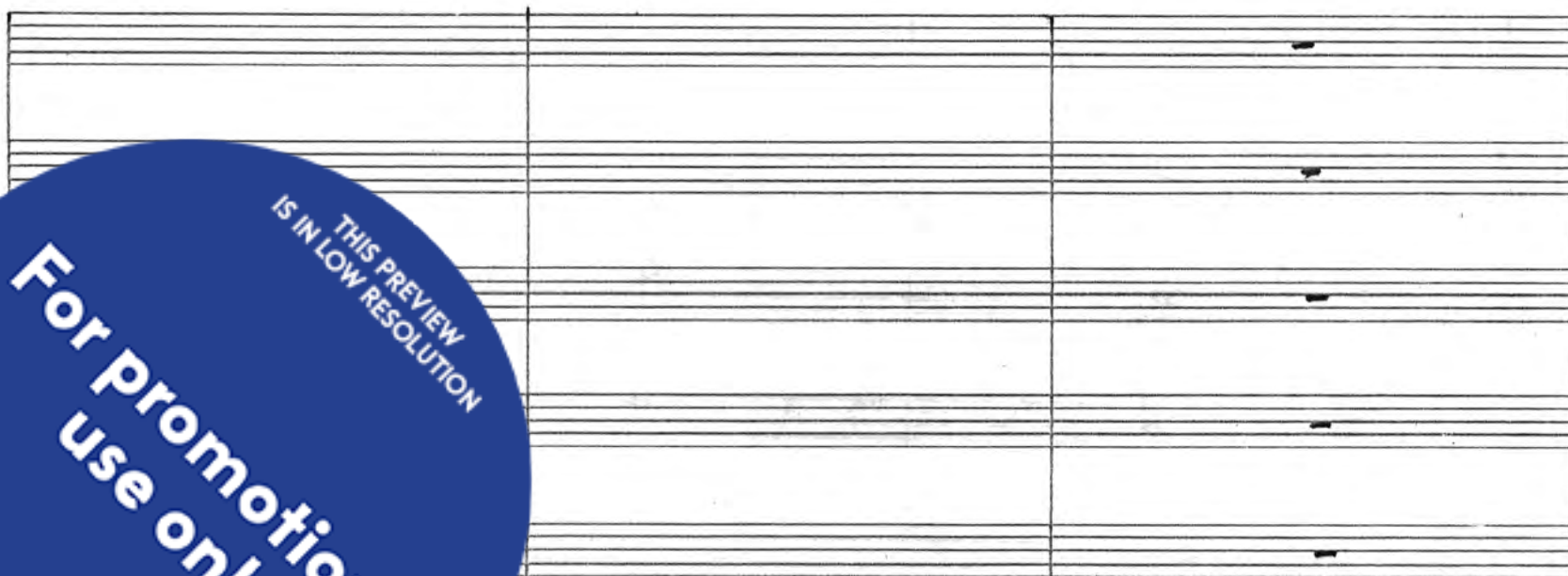
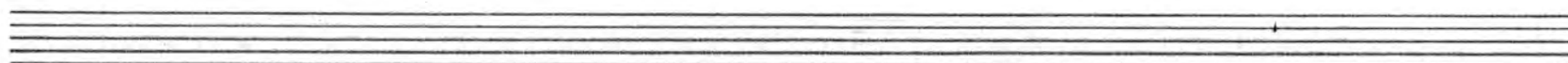
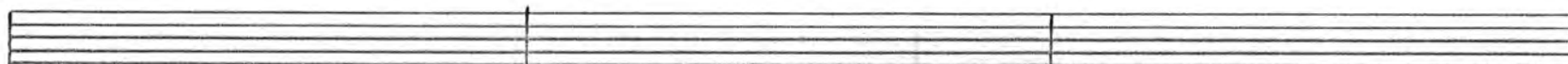
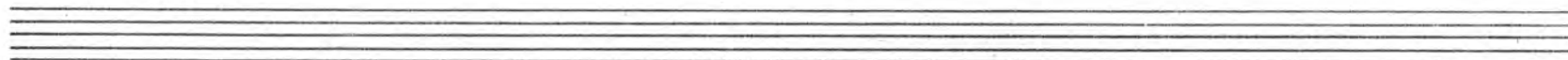
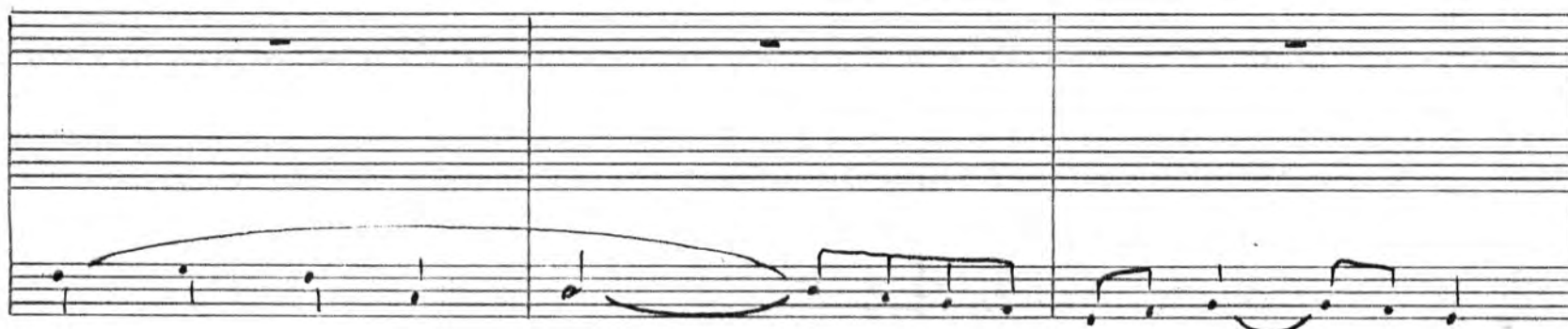
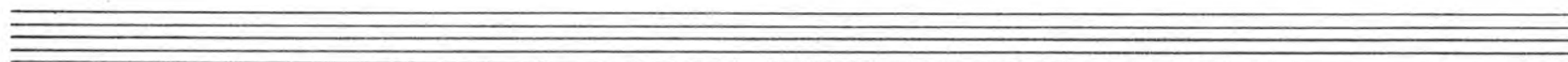
2 Trombe C I mf
in B

Timpani C *tacet*

Violini I C

Violini II C





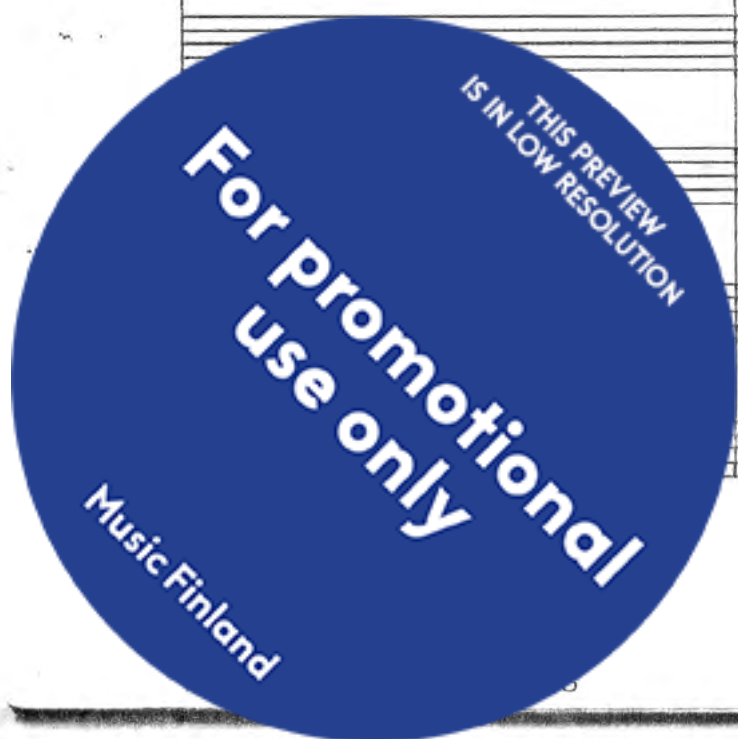
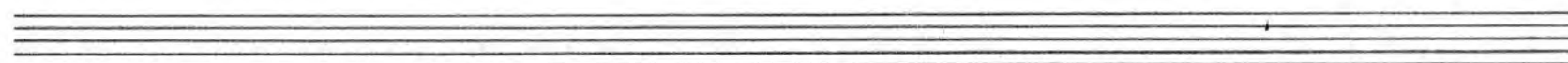
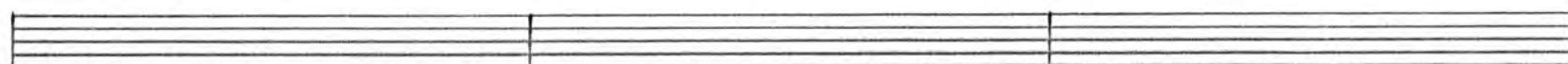
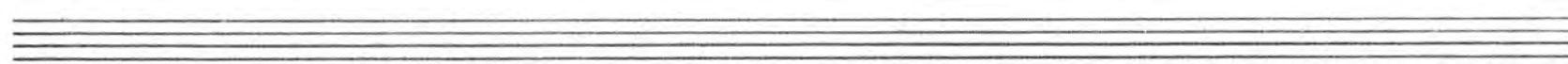
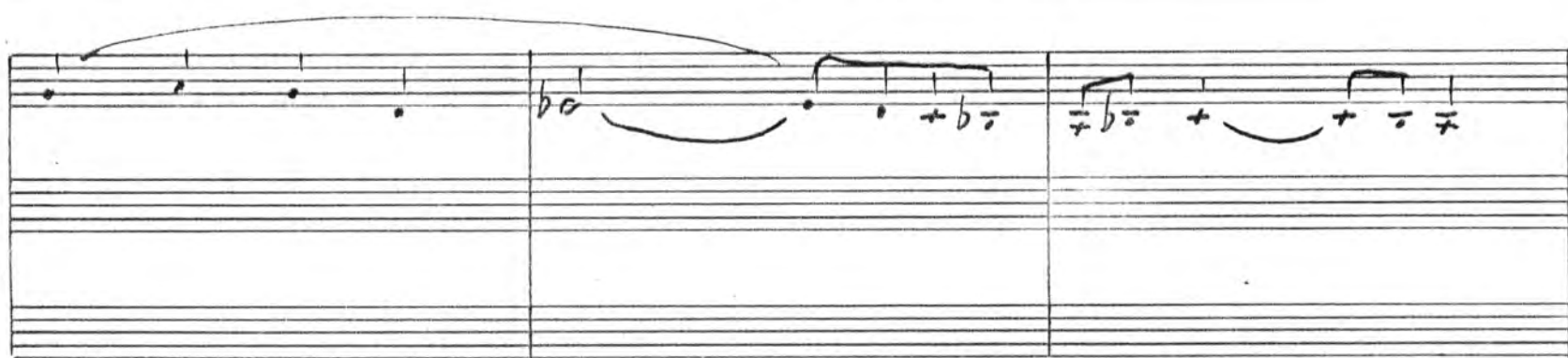
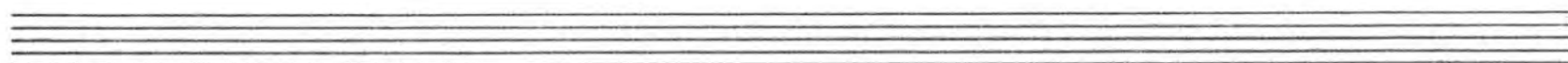
a2

II

THIS PREVIEW
IS IN LOW RESOLUTION

**For promotional
use only**

Music Finland

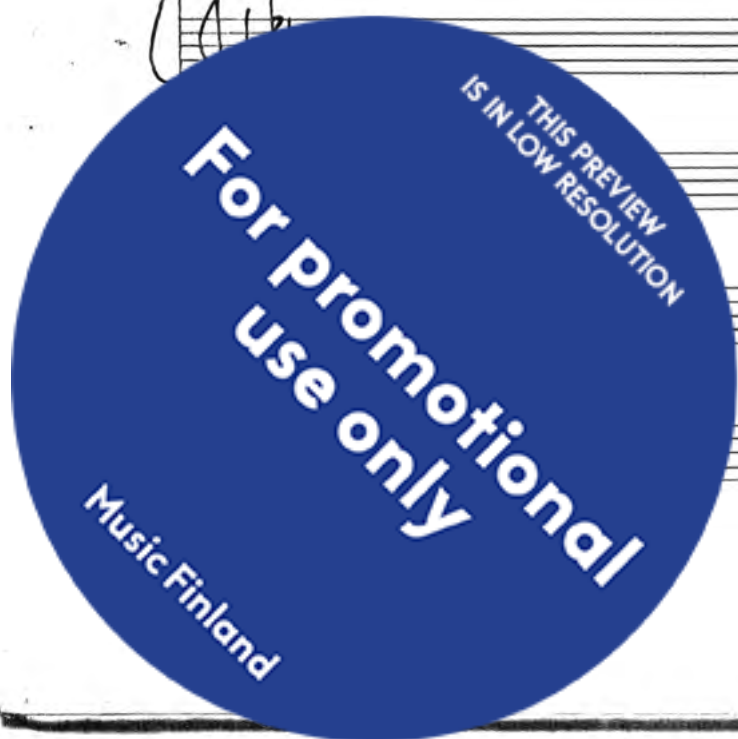


Handwritten musical score for the first system, measures 1-3. The system consists of four staves. The first staff has a treble clef and a key signature of two flats (B-flat and E-flat). It contains a series of eighth notes with accidentals (sharps and naturals) and a final sharp sign. The second staff has a treble clef and a key signature of two flats, containing eighth notes and a final sharp sign. The third staff has a treble clef and a key signature of two flats, containing a half note and a final sharp sign. The fourth staff has a treble clef and a key signature of two flats, containing a half note and a final sharp sign.

Handwritten musical score for the second system, measures 4-6. The system consists of four staves. The first staff has a treble clef and a key signature of two flats, containing a half note and a final sharp sign. The second staff has a treble clef and a key signature of two flats, containing a half note and a final sharp sign. The third staff has a treble clef and a key signature of two flats, containing a half note and a final sharp sign. The fourth staff has a treble clef and a key signature of two flats, containing a half note and a final sharp sign.

Handwritten musical score for the third system, measures 7-9. The system consists of four staves. The first staff has a treble clef and a key signature of two flats, containing a half note and a final sharp sign. The second staff has a treble clef and a key signature of two flats, containing a half note and a final sharp sign. The third staff has a treble clef and a key signature of two flats, containing a half note and a final sharp sign. The fourth staff has a treble clef and a key signature of two flats, containing a half note and a final sharp sign.

Handwritten musical score for the fourth system, measures 10-12. The system consists of four staves. The first staff has a treble clef and a key signature of two flats, containing a half note and a final sharp sign. The second staff has a treble clef and a key signature of two flats, containing a half note and a final sharp sign. The third staff has a treble clef and a key signature of two flats, containing a half note and a final sharp sign. The fourth staff has a treble clef and a key signature of two flats, containing a half note and a final sharp sign.



Handwritten musical score for the first system, measures 1-3. The system consists of four staves. The first two staves contain a melody with various notes and rests. The third and fourth staves contain a bass line with notes and rests. The key signature is one flat (B-flat). The time signature is 4/4. The notation includes various musical symbols such as notes, rests, and accidentals.

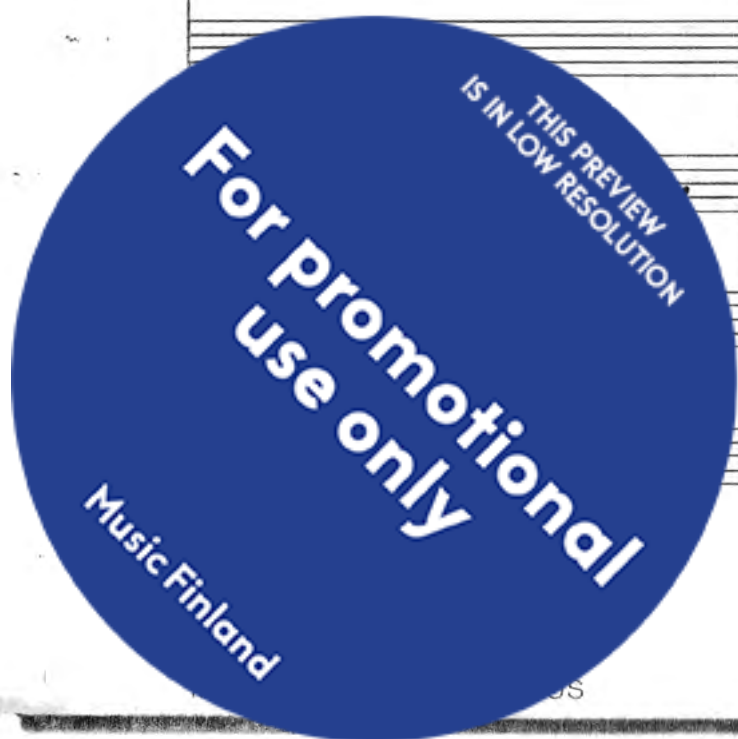
Handwritten musical score for the second system, measures 4-6. The system consists of four staves. The first two staves contain a melody with various notes and rests. The third and fourth staves contain a bass line with notes and rests. The key signature is one flat (B-flat). The time signature is 4/4. The notation includes various musical symbols such as notes, rests, and accidentals.

Empty musical staff for the third system.

Empty musical staff for the fourth system.

Empty musical staff for the fifth system.

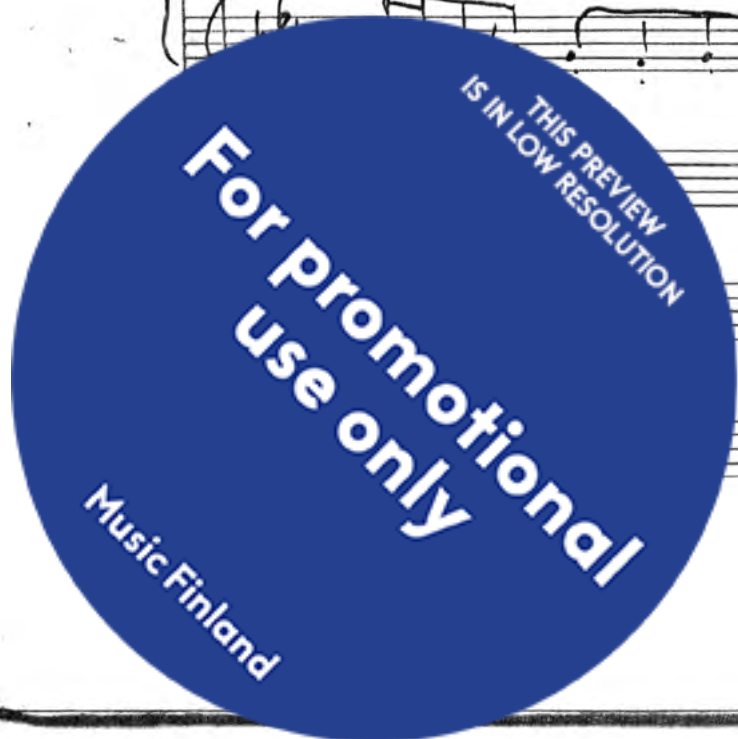
Handwritten musical score for the sixth system, measures 7-9. The system consists of four staves. The first two staves contain a melody with various notes and rests. The third and fourth staves contain a bass line with notes and rests. The key signature is one flat (B-flat). The time signature is 4/4. The notation includes various musical symbols such as notes, rests, and accidentals.



Handwritten musical notation for the first system, measures 1-3. The system consists of four staves. The first two staves are treble clef with a key signature of two flats (Bb, Eb). The third and fourth staves are bass clef with a key signature of two flats (Bb, Eb). The notation includes whole notes, half notes, and quarter notes, with some notes marked with a dot above them.

Empty musical staves for the second system, consisting of four staves (two treble clef, two bass clef).

Handwritten musical notation for the third system, measures 4-6. The system consists of four staves. The first two staves are treble clef with a key signature of two flats (Bb, Eb). The third and fourth staves are bass clef with a key signature of two flats (Bb, Eb). The notation includes whole notes, half notes, and quarter notes, with some notes marked with a dot above them.



Handwritten musical score for "The Rose Tree". The score is written on four staves. The first three staves are for Soprano, Alto, and Tenor voices, and the fourth staff is for the Bass line. The time signature is 4/4. The key signature has one sharp (F#). The lyrics "The Rose Tree" are written below the Bass line.

Measure 1:

- Soprano: G4 (half note)
- Alto: F#4 (half note)
- Tenor: E4 (half note)
- Bass: D3 (half note)

Measure 2:

- Soprano: A4 (half note)
- Alto: G4 (half note)
- Tenor: F#4 (half note)
- Bass: E3 (half note)

Measure 3:

- Soprano: B4 (half note)
- Alto: A4 (half note)
- Tenor: G4 (half note)
- Bass: F#3 (half note)

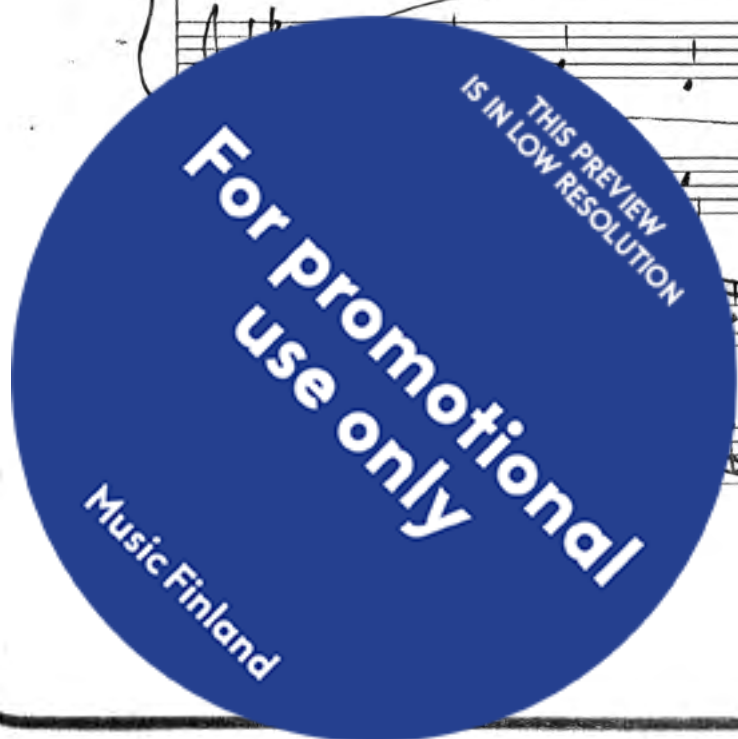
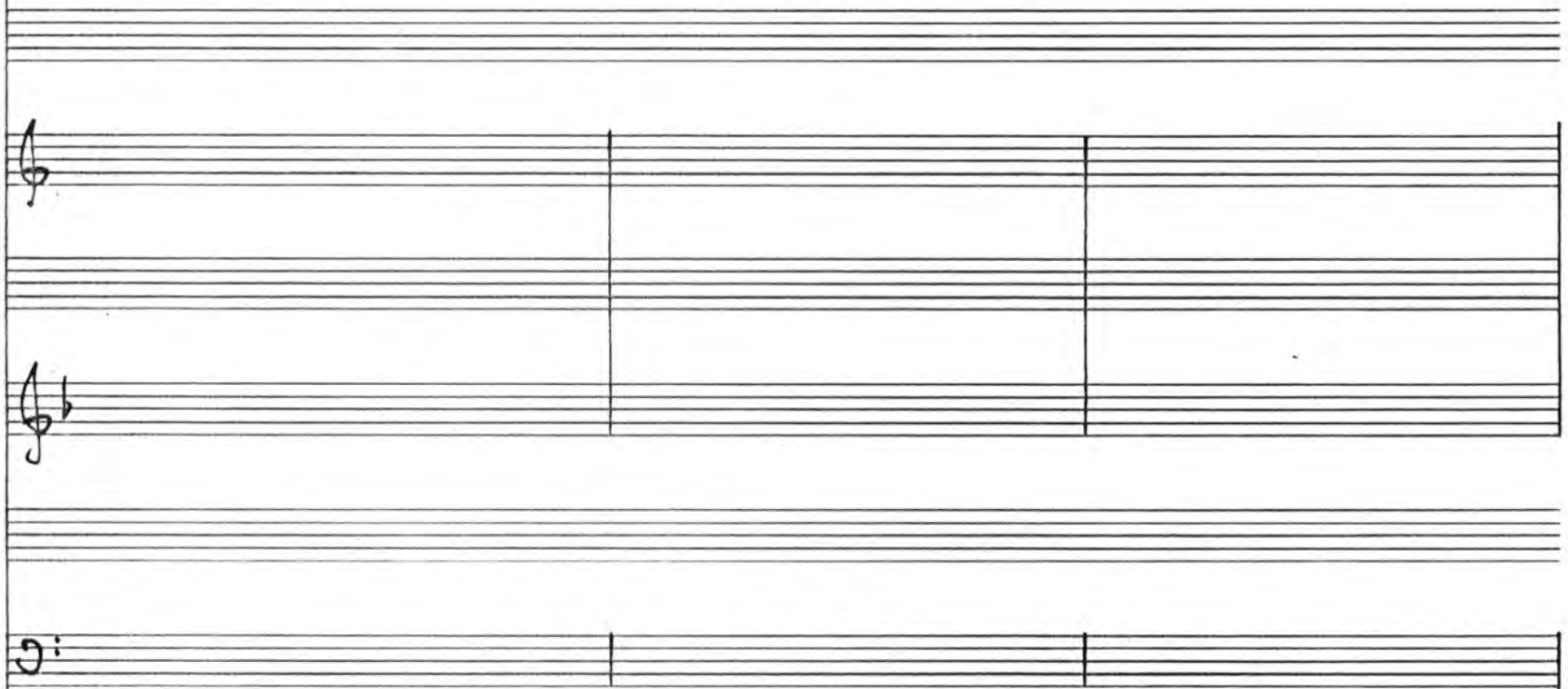
[illegible]

| | | |
|--|--|--|
| | | |
| | | |
| | | |
| | | |

Handwritten musical score for "The Rose Tree" featuring three voices (Soprano, Alto, Tenor) and piano accompaniment. The score is written on ten staves. The first system shows the vocal entries and piano accompaniment. The second system continues the vocal parts and piano accompaniment. The third system shows the vocal parts and piano accompaniment. The score is marked with "mp" (mezzo-piano) and includes a blue circular watermark that reads "THIS PREVIEW IS IN LOW RESOLUTION For promotional use only".

THIS PREVIEW
IS IN LOW RESOLUTION

**For promotional
use only**



Handwritten musical score for the song "The Rose Tree". The score is written on four staves. The first staff contains the melody, starting with a treble clef and a key signature of one sharp (F#). The second staff contains the bass line, starting with a bass clef and a key signature of one sharp (F#). The third and fourth staves contain the lyrics, written in a cursive hand. The lyrics are: "The Rose Tree", "The Rose Tree", "The Rose Tree", "The Rose Tree". The score is written on a single sheet of paper with a vertical line down the center, separating the two systems of music. The handwriting is in ink on aged paper.

[illegible]

| | | |
|--|--|--|
| | | |
| | | |
| | | |
| | | |

[Handwritten notes on lined paper]

A handwritten musical score for the song "The Rose Tree". The score is written on a system of five staves. The first staff contains a treble clef, a key signature of one sharp (F#), and a 3/4 time signature. The melody is written on the first staff, with lyrics "The Rose Tree" written below it. The second staff contains a bass clef and the lyrics "The Rose Tree". The third staff contains a bass clef and the lyrics "The Rose Tree". The fourth staff contains a bass clef and the lyrics "The Rose Tree". The fifth staff contains a bass clef and the lyrics "The Rose Tree". A large blue circular watermark is overlaid on the left side of the image, containing the text "THIS PREVIEW IS IN LOW RESOLUTION" and "For promotional use only".

THIS PREVIEW
IS IN LOW RESOLUTION

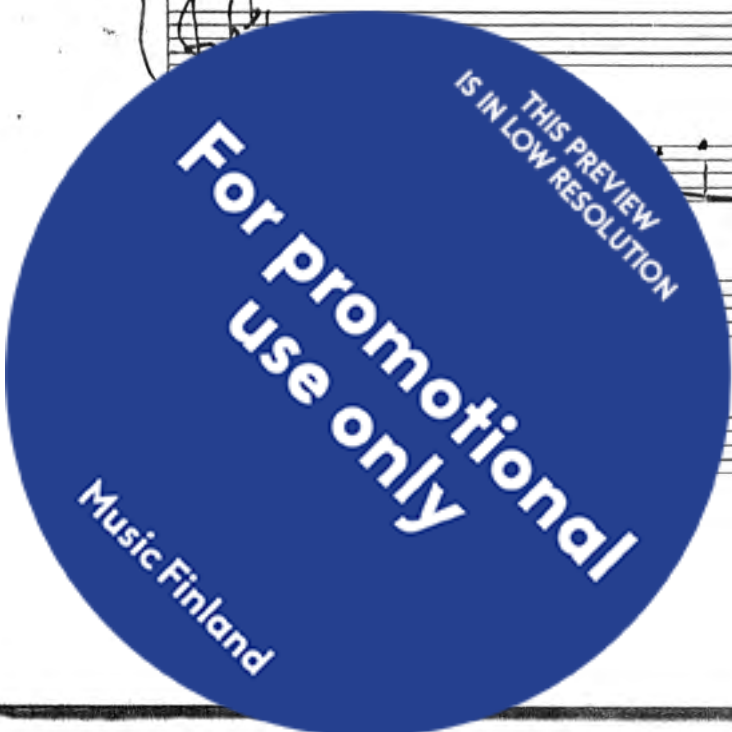
For promotional use only

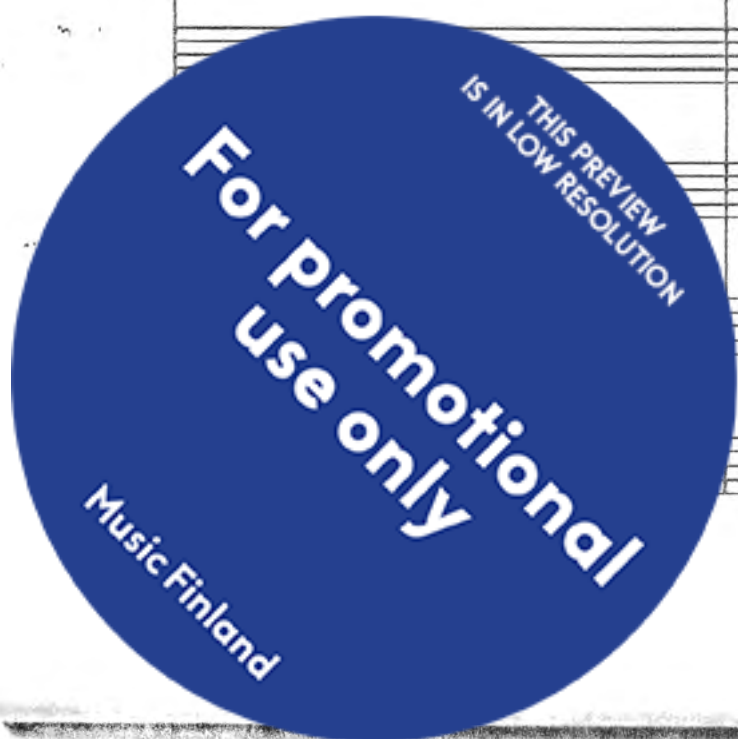
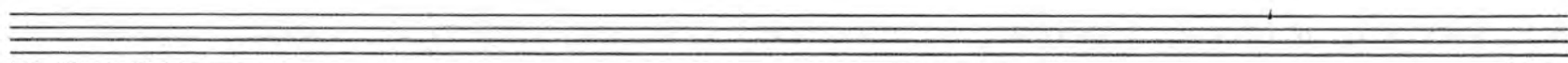
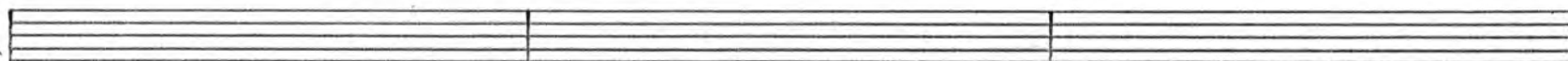
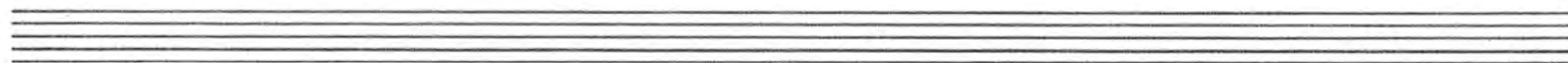
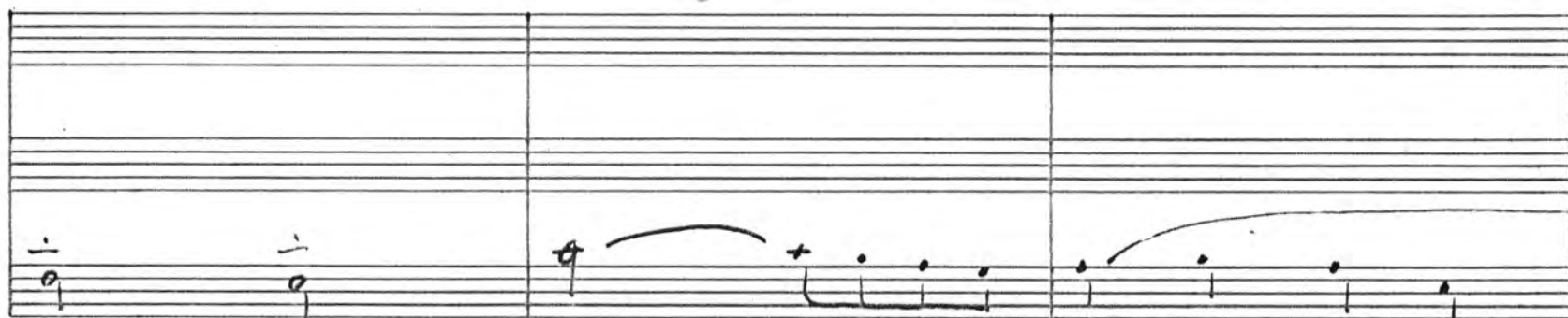
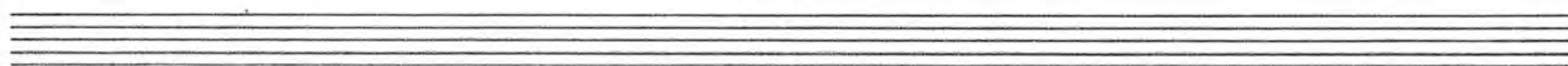
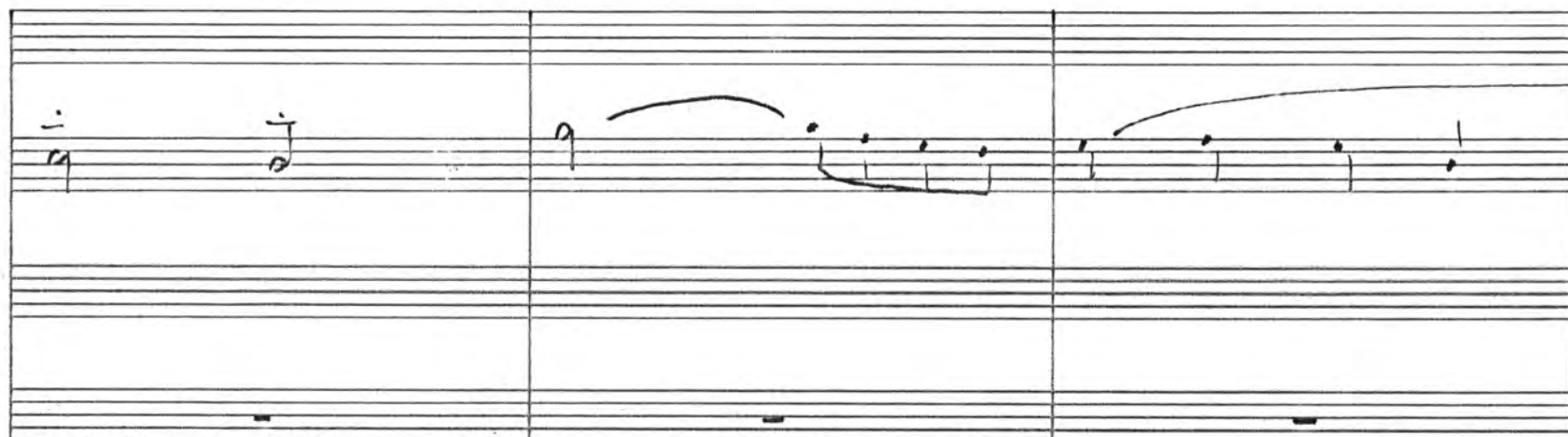


Handwritten musical score for measures 1-3. The score is written on four staves. The first staff is a treble clef with a key signature of two flats (B-flat and E-flat). The second staff is a treble clef with a key signature of two flats. The third staff is a treble clef with a key signature of two flats. The fourth staff is a bass clef with a key signature of two flats. The notation includes various musical symbols such as notes, rests, and dynamic markings like *pp* and *ppp*.

Handwritten musical score for measures 4-6. The score is written on three staves. The first staff is a treble clef with a key signature of two flats. The second staff is a treble clef with a key signature of two flats. The third staff is a bass clef with a key signature of two flats. The notation includes various musical symbols such as notes, rests, and dynamic markings like *pp* and *ppp*.

Handwritten musical score for measures 7-9. The score is written on four staves. The first staff is a treble clef with a key signature of two flats. The second staff is a treble clef with a key signature of two flats. The third staff is a treble clef with a key signature of two flats. The fourth staff is a bass clef with a key signature of two flats. The notation includes various musical symbols such as notes, rests, and dynamic markings like *pp* and *ppp*. A measure number '13' is written above the third staff in measure 8.





Handwritten musical score for the first system, measures 1-3. The system consists of four staves. The first staff has a treble clef and a key signature of two flats (B-flat and E-flat). The second staff has a treble clef and a key signature of two flats. The third staff has a treble clef and a key signature of two flats. The fourth staff has a bass clef and a key signature of two flats. The notation includes various notes, rests, and dynamic markings. In measure 3, there are markings for *fa2*, *f*, *a2*, *a2*, and *f*.

Handwritten musical score for the second system, measures 4-5. The system consists of four staves. The first staff has a treble clef and a key signature of two flats. The second staff has a treble clef and a key signature of two flats. The third staff has a treble clef and a key signature of two flats. The fourth staff has a bass clef and a key signature of two flats. The notation includes various notes, rests, and dynamic markings. In measure 4, there is a marking for *mf*. In measure 5, there is a marking for *mf*.

Handwritten musical score for the third system, measures 6-7. The system consists of four staves. The first staff has a treble clef and a key signature of two flats. The second staff has a treble clef and a key signature of two flats. The third staff has a treble clef and a key signature of two flats. The fourth staff has a bass clef and a key signature of two flats. The notation includes various notes, rests, and dynamic markings. In measure 6, there is a marking for *pizz.*. In measure 7, there is a marking for *f*.

THIS PREVIEW
IS IN LOW RESOLUTION

**For promotional
use only**

Music Finland

Handwritten musical notation on a four-staff system. The first two staves contain complex melodic lines with many beamed notes and slurs. The third and fourth staves contain simpler, more sustained notes, some with slurs. The notation is in a single system across three measures.

A system of five empty musical staves.

Handwritten musical notation on a single staff, spanning three measures. It features a few notes with slurs, followed by a series of beamed notes. The rest of the staff is empty.

A system of five empty musical staves.

A system of five empty musical staves.

A system of five empty musical staves.

Handwritten musical notation on a two-staff system, spanning three measures. The notation is simple, with a few notes and slurs on each staff.

