

FOR PROMOTIONAL USE ONLY



13 836

Markus Fagerudd

BROTHERS

1989

TEOSTO

SUOMALAISEN MUSIIKIN TIEDOTUSKESKUS
FINNISH MUSIC INFORMATION CENTRE

FOR PROMOTIONAL USE ONLY
FIMIC

© Copyright by the Composer

All Rights Reserved

**No part of this publication may be copied
or reproduced in any form or by any means
without the prior permission of the composer**

Distribution by the Finnish Music Information Centre
Lauttasaarentie 1
FIN-00200 Helsinki

Helsinki, 1996

FOR PROMOTIONAL USE ONLY
 FIMIC

Markus Fagerudd 1989

BROTHERS

FOR PROMOTIONAL USE ONLY



Z = fast roll



Finnish Music Information Centre

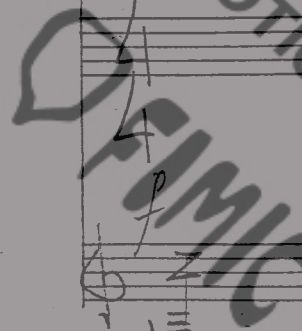
$\text{♩} = 60$

Handwritten musical score for the first system. It consists of two staves. The top staff is a piano staff with a treble clef, a key signature of one sharp (F#), and a 3/4 time signature. It contains a melodic line with a fermata over the first measure, followed by notes with dynamic markings *pp*, *p*, *pp*, and *mf*. The bottom staff is a guitar staff with a treble clef, a key signature of one sharp, and a 3/4 time signature. It contains a bass line with dynamic markings *p* and *pp*, and a *mf* marking. Fingerings '5' and '4' are written above the notes. There are also some handwritten annotations like '8' and '8i.'.

Handwritten musical score for the second system. It consists of two staves. The top staff is a piano staff with a treble clef, a key signature of one sharp, and a 3/4 time signature. It contains a melodic line with a fermata over the first measure, followed by notes with dynamic markings *pp* and *f*. The bottom staff is a guitar staff with a treble clef, a key signature of one sharp, and a 3/4 time signature. It contains a bass line with dynamic markings *pp* and *f*. Fingerings '3' and '5' are written above the notes. There are also some handwritten annotations like '5', '3', and 'glass roll'.

Handwritten musical score for the third system. It consists of two staves. The top staff is a piano staff with a treble clef, a key signature of one sharp, and a 3/4 time signature. It contains a melodic line with a fermata over the first measure, followed by notes with dynamic markings *p*. The bottom staff is a guitar staff with a treble clef, a key signature of one sharp, and a 3/4 time signature. It contains a bass line with dynamic markings *p*. Fingerings '3' and '5' are written above the notes. There are also some handwritten annotations like '3', '5', and 'p'.

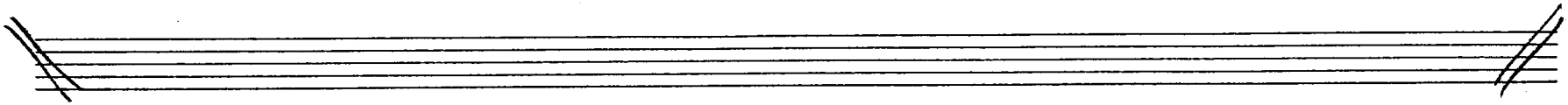
FOR PROMOTIONAL USE ONLY



10

>

Handwritten musical notation for the first system. It consists of a bass staff and a treble staff. The bass staff begins with a treble clef and a 3/4 time signature. The treble staff begins with a bass clef. Both staves contain rhythmic patterns, primarily eighth and sixteenth notes, with several accents (>) placed above notes. The notation is dense and appears to be a transcription of a specific musical style.



Handwritten musical notation for the second system. It includes a bass staff and a treble staff. The bass staff has dynamic markings of *mf* and *p*, and performance instructions like "diss roll" written above the staff. The treble staff also has dynamic markings of *mf* and *p*, and "diss roll" written below the staff. The notation continues with rhythmic patterns and accents.

Handwritten musical notation for the third system. It features a bass staff and a treble staff. The bass staff has a 5/4 time signature and dynamic markings of *mf* and *mp*. The treble staff has dynamic markings of *mf* and *mp*. The notation includes rhythmic patterns and accents.

FOR PROMOTIONAL USE ONLY
FIMM

15

Handwritten musical score for the first system. It consists of three staves. The top staff is a treble clef with a key signature of one sharp (F#) and a 7/4 time signature. It contains a series of notes with stems, some beamed together, and rests. The middle staff is a bass clef with a 5/4 time signature, featuring a long horizontal line with a double bar and a dynamic marking of *pp*. The bottom staff is a treble clef with a key signature of one sharp (F#) and a 7/4 time signature, containing notes and rests. The system ends with a double bar line.

Handwritten musical score for the second system. It consists of two staves. The top staff is a treble clef with a key signature of one sharp (F#) and a 7/4 time signature. It features complex rhythmic patterns, including a triplet of eighth notes and a quintuplet of eighth notes. The bottom staff is a bass clef with a key signature of one sharp (F#) and a 7/4 time signature, containing notes and rests. The system ends with a double bar line.

20

Handwritten musical score for the third system. It consists of three staves. The top staff is a treble clef with a key signature of one sharp (F#) and a 7/4 time signature. It contains notes and rests, with a dynamic marking of *f*. The middle staff is a bass clef with a key signature of one sharp (F#) and a 7/4 time signature, featuring a dynamic marking of *3ff* and a 2/4 time signature. The bottom staff is a treble clef with a key signature of one sharp (F#) and a 7/4 time signature, containing notes and rests, with a dynamic marking of *pp*. The system ends with a double bar line.

FOR PROMOTIONAL USE ONLY
FIMIC

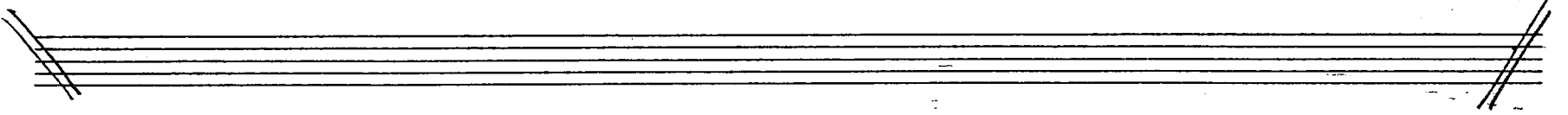
Handwritten musical notation for the first system. The top staff is a bass clef staff containing five measures of chords, each with a slur and a '+' sign above it. The first measure has a '5' below it, the second has a '5', the third has a '5', the fourth has a '5', and the fifth has a '6'. Below the bass staff are two empty staves. The bottom staff is a grand staff (treble and bass clefs) with a long, sweeping line across it labeled 'gliss roll'. The grand staff starts with a treble clef and a key signature of one sharp (F#).

Handwritten musical notation for the second system. The top staff is a bass clef staff with five measures of chords, each with a slur and a '+' sign above it. The first measure has a '6' below it, the second has a '7', the third has a '3', the fourth has a '3', and the fifth has a '3'. Below the bass staff are two empty staves. The bottom staff is a grand staff with the lyrics 'c-r-e-s-c-e-n-d-o' written across it. The grand staff starts with a treble clef and a key signature of one sharp (F#). The word 'crescendo' is written in a stylized, spaced-out font. Below the grand staff is a long, sweeping line labeled 'sempre pp'.

Handwritten musical notation for the third system. The top staff is a bass clef staff with five measures of chords, each with a slur and a '+' sign above it. Below the bass staff are two empty staves. The bottom staff is a grand staff with a '3' above it and a '4' below it, indicating a 3/4 time signature. The grand staff starts with a treble clef and a key signature of one sharp (F#). Below the grand staff is a long, sweeping line.

FOR PROMOTIONAL USE ONLY
FIMIC

Handwritten musical notation for the first system. The top staff is in treble clef, containing notes and rests. The middle staff is in bass clef, also with notes and rests. The bottom staff is a grand staff with dynamic markings 'pp' and 'mf' and a '3' over a bar line. A '6/4' time signature is written on the left.



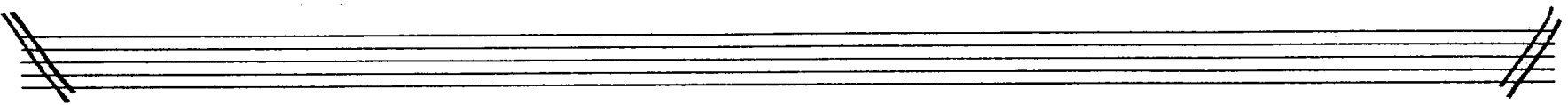
Handwritten musical notation for the second system. The top staff is in treble clef, containing notes and rests. The middle staff is in bass clef, also with notes and rests. The bottom staff is a grand staff with dynamic markings 'mf' and 'pp' and a '3' over a bar line. A '6/4' time signature is written on the left.

Handwritten musical notation for the third system. The top staff is in treble clef, containing notes and rests. The middle staff is in bass clef, also with notes and rests. The bottom staff is a grand staff with dynamic markings 'pp' and 'mf' and a '3' over a bar line. A '6/4' time signature is written on the left.

FOR PROMOTIONAL USE ONLY
FILM

glass roll

Handwritten musical notation for the first system. The top staff is in treble clef and contains several measures with rhythmic patterns, including triplets and a quintuplet. The bottom staff is in bass clef and contains corresponding bass lines. A measure number '35' is written above the top staff. A large bracket with a '3' is written below the first two staves, and another large bracket with a '4' is written below the next two staves.



Handwritten musical notation for the second system. The top staff is in treble clef and features a long melodic line with a slur and a 'gliss' marking. The bottom staff is in bass clef and contains a complex rhythmic pattern with a '7' above it. A time signature of 2/4 is written on the left. Dynamic markings 'ff' and 'p' are present. A large bracket with a '4' is written below the staves.

Handwritten musical notation for the third system. The top staff is in treble clef and contains a complex rhythmic pattern with a '3' above it. The bottom staff is in bass clef and contains a complex rhythmic pattern with a '5' above it. A time signature of 3/4 is written on the left. A measure number '40' is written above the top staff. A large bracket with a '4' is written below the staves.

FOR PROMOTIONAL USE ONLY
FIMIC

Handwritten musical score for the first system. It consists of three staves. The top staff is a vocal line in treble clef with a key signature of one flat and a common time signature. It contains several measures of music with slurs and ties. The middle staff is a vocal line in bass clef with lyrics: "r-i-t-a-r-d-a-n". The bottom staff is a piano accompaniment in treble clef with a key signature of one flat and a common time signature, featuring chords and a melodic line. Dynamics include *mp* and *p*.

Handwritten musical score for the second system. It consists of three staves. The top staff is a piano accompaniment in treble clef with a key signature of one flat and a common time signature, featuring chords and a melodic line. The middle staff is a vocal line in bass clef with lyrics: "2-d-o". The bottom staff is a piano accompaniment in treble clef with a key signature of one flat and a common time signature, featuring chords and a melodic line. Dynamics include *p*, *mp*, and *a tempo*. There are also tempo markings "45" and "50".

Handwritten musical score for the third system. It consists of three staves. The top staff is a piano accompaniment in treble clef with a key signature of one flat and a common time signature, featuring chords and a melodic line. The middle staff is a vocal line in bass clef with lyrics: "sempre legato". The bottom staff is a piano accompaniment in treble clef with a key signature of one flat and a common time signature, featuring chords and a melodic line. Dynamics include *mp* and *p*. There is a tempo marking "50".

FOR PROMOTIONAL USE ONLY
FIMM

Dezerby 19.04.1989

Markus Fogera

FOR PROMOTIONAL USE ONLY

