

8176

Pekka Jalakanen

Melunaa

kolmelle viisikieliselle kanteleelle

1985

TEOSTO

*SUOMALAISEN MUSIIKIN TIEDOTUSKESKUS
FINNISH MUSIC INFORMATION CENTRE*



© Copyright by the Composer

All Rights Reserved

**No part of this publication may be copied
or reproduced in any form or any means
without the prior permission of the composer**

Distribution by the Finnish Music Information Centre
Lauttasaarentie 1
FIN-00200 Helsinki

www.fimic.fi

Helsinki, 2002



Pekka Jalakanen 1985

Melunaa

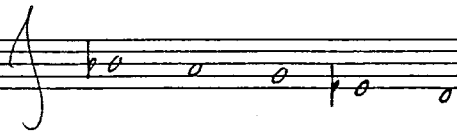
kahdelle viirikieliselle kantelulle

kesto n 4'40"

For promotional
use only

Music Finland

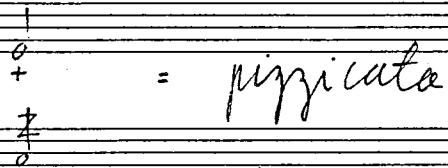
Viritys:



Erityismerkintäjä :



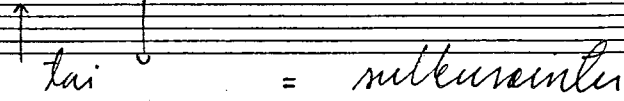
= *accentiflagellato*



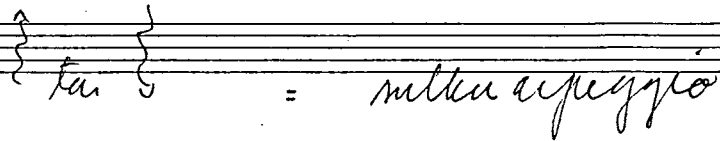
= *pizzicato*



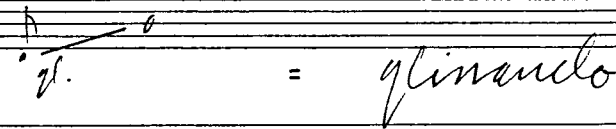
= *tremolo - o.k. / 2*



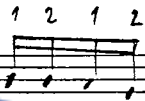
= *mtkurauttu*



= *mtku a specchio*



= *glissando*



= *sormitus, merkitty vain oikealle kädelle*

For promotional use only

Music Finland

Melunaa

Pirkka Jalonen
1985

kalmelle viirikielinlle kantelelle

Allegretto ♩ ~ 104

perante

dalee, kantele

1.
2.
3.

perante

5

6

4

10

15

For Promotional
use only

Music Finland
MIC nr 6,5-10,2-18

lilero, misterioso

20

Handwritten musical score for measures 20 and 21. The top staff is in treble clef with a key signature of one flat. The bottom staff is in bass clef. Measure 20 starts with a dynamic marking of *g* and a tempo marking of *mp*. A bracket groups the first two notes of the top staff. Measure 21 features a *mp* dynamic marking and a fermata over the final note of the top staff. The bottom staff has several notes with '+' signs below them.

22

Handwritten musical score for measure 22. The top staff is in treble clef with a key signature of one flat. The bottom staff is in bass clef. Measure 22 starts with a dynamic marking of *g* and a tempo marking of *mp*. A bracket groups the first two notes of the top staff. The bottom staff has several notes with '+' signs below them.

risoluto, l'istesso tempo

5 + 6 + 5 / ♯

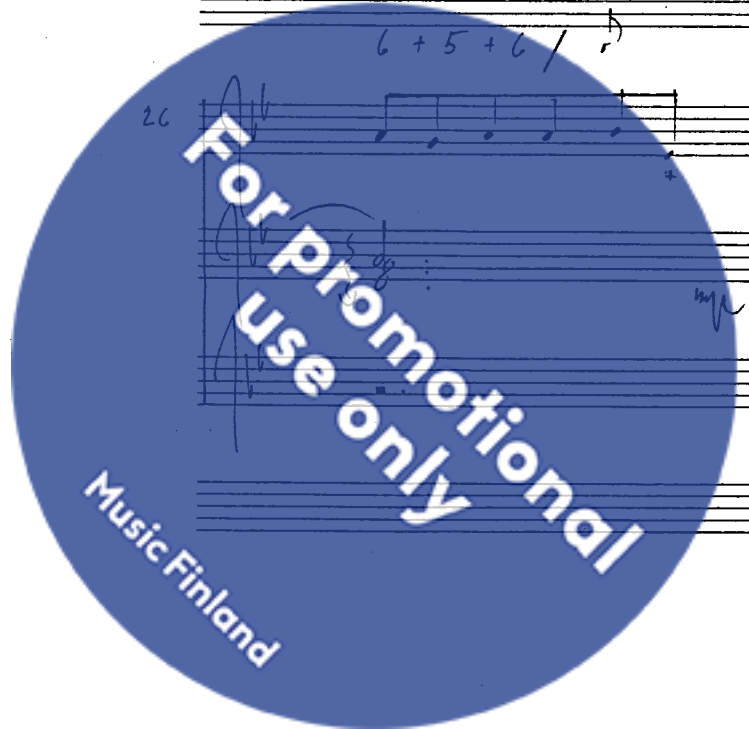
23

Handwritten musical score for measures 23 and 24. The top staff is in treble clef with a key signature of one flat. The bottom staff is in bass clef. Measure 23 starts with a dynamic marking of *g* and a tempo marking of *mp*. A bracket groups the first two notes of the top staff. Measure 24 features a *mp* dynamic marking and a fermata over the final note of the top staff. The bottom staff has several notes with '+' signs below them.

6 + 5 + 6 / ♯

26

Handwritten musical score for measures 26 and 27. The top staff is in treble clef with a key signature of one flat. The bottom staff is in bass clef. Measure 26 starts with a dynamic marking of *g* and a tempo marking of *mp*. A bracket groups the first two notes of the top staff. Measure 27 features a *mp* dynamic marking and a fermata over the final note of the top staff. The bottom staff has several notes with '+' signs below them.



5 + 6 + 5 / ♯

24

6 + 7 + 6 / ♯

25

5 + 6 + 5 / ♯

27

5 + 7 + 4 / ♯

30



31

6

4

ritardando

32

3

4

poco

33

4

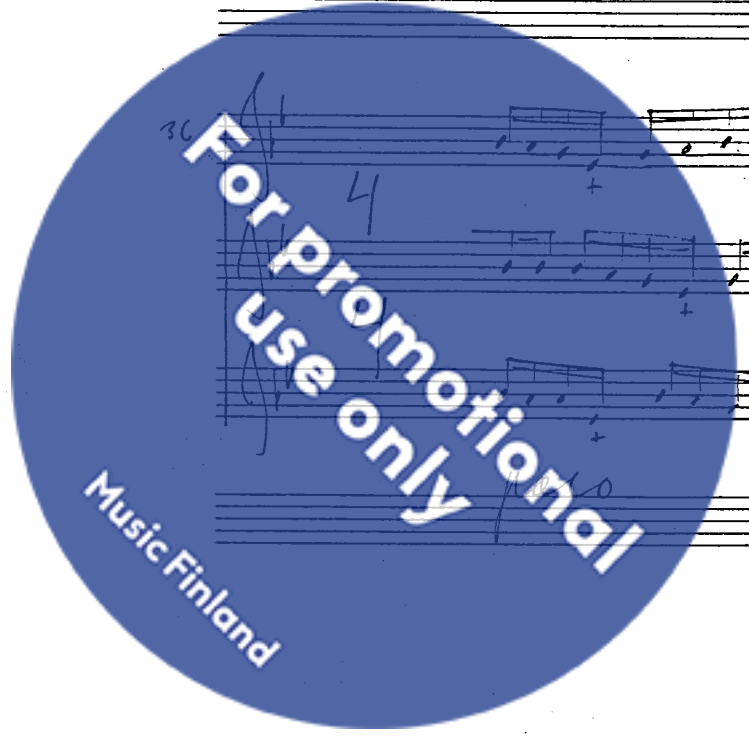
4

a

5/4

34

4



agitato

37

1 2 1 2 simile

3

molto

41

1 2 1 2 simile

3

4

44

1 2 1 2 simile

4

diminuendo

poco

47

1 2 1 2 simile

4



4 + 6 + 4 /

50

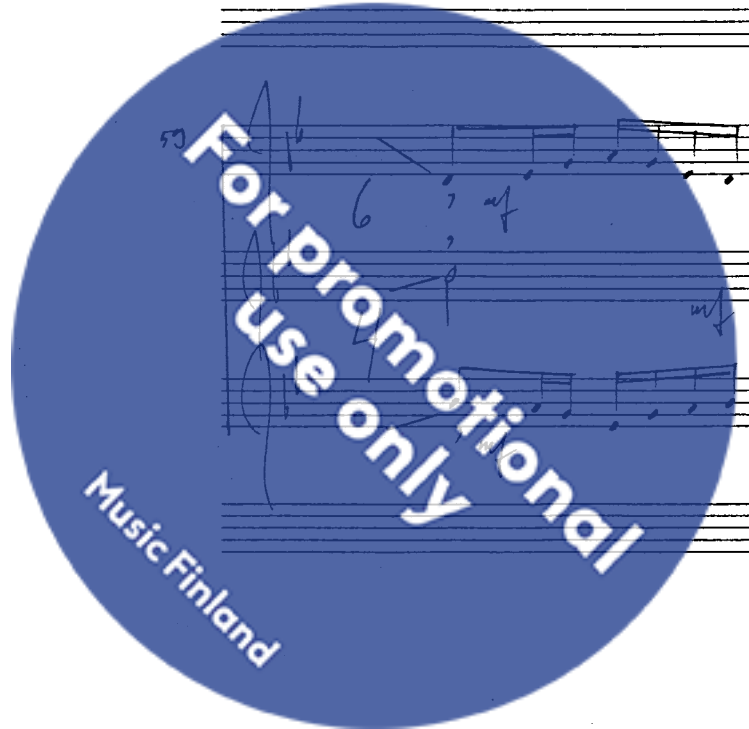
52

53

libera

a tempo:

54



60

61

12 / *rit.*

1 2 1 2 *simile*

1 2 1 2 *simile*

1 2 1 2 *simile*

62

accelerando

5

4

63

rit.

libera

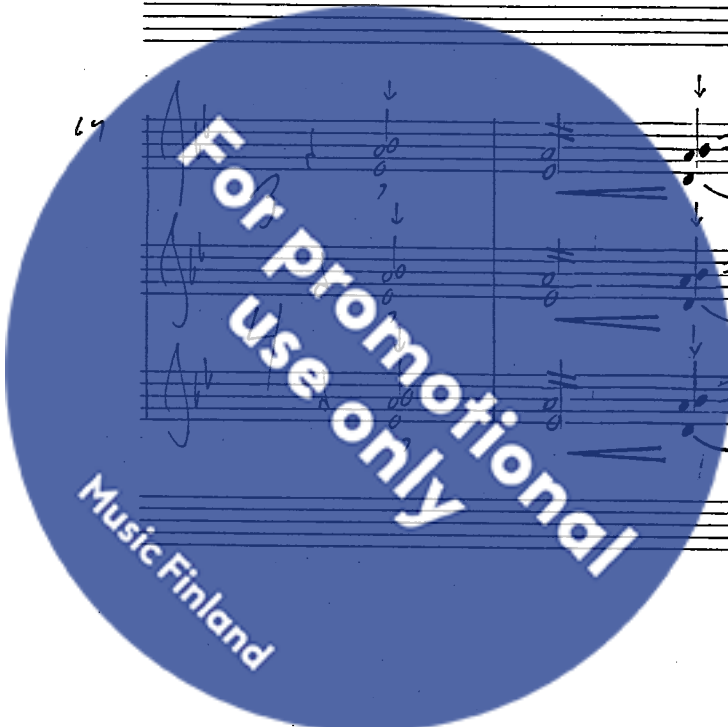
mf

6

4

mp

3



69

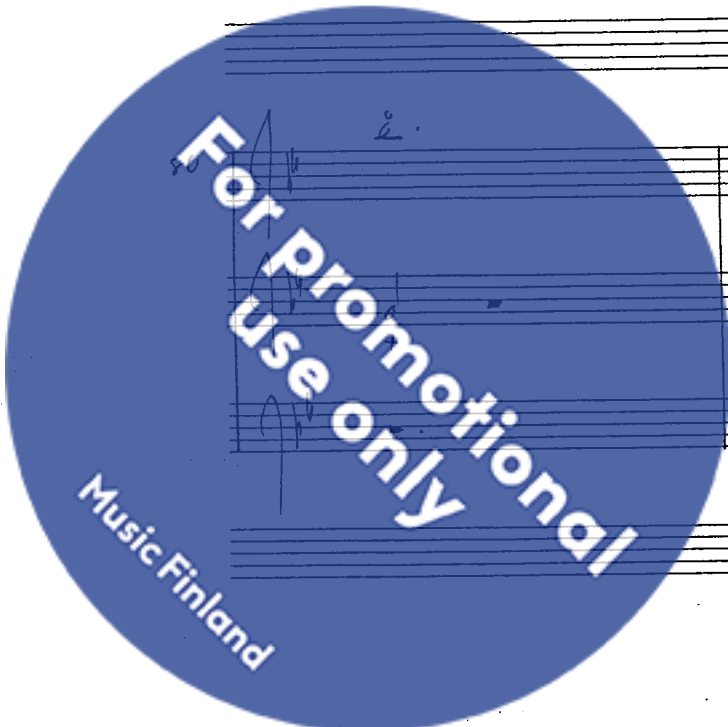
allegro

72

76

80

FINE



kuto ~ 4'40"
Uuhimki, 28. 1. 1955