

22 113

Tiina Myllärinen

Fantasy

Version for pneumatic organ

2011

FOR PROMOTIONAL USE ONLY
 FIMIC

Copyright © by the Composer

All Rights Reserved

No part of this publication may be copied
or reproduced in any form or by any means
without the prior permission of the composer

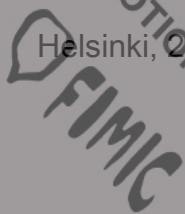


Distribution:
Finnish Music Information Centre Fimic
Music Library
Lauttasaarentie 1
FI-00200 HELSINKI
Finland

musiclibrary@fimic.fi

www.fimic.fi

Helsinki, 2012



FOR PROMOTIONAL USE ONLY

Performance instructions

Fantasy

version for pneumatic organ

DIFFERENT NOTEHEADS



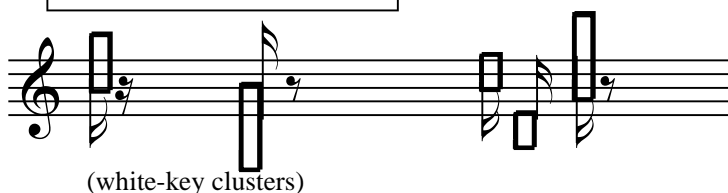
Open square noteheads show the keys to be taken off. In this example the notes of the chord are taken away from down to up. E flat remains (normal notehead).

WITHOUT REGISTRATION!



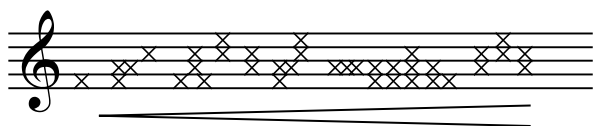
Open triangle noteheads mean that the notes are played without registration. No pitch comes out.

WITHOUT REGISTRATION!



(white-key clusters)

White-key clusters without any registration.



Open and close the stops manually, first only one stop and then more stops at the same time (changing the amount of stops). Try to make sound like rain (starts slowly, then accelerates). No playing on the manuals. Crescendos mean increasing activity.

The amount of crosses (1-5) describes the amount of stops. One cross means 1-2 stops, 5 is the maximum you can do. **Don't use any tremolo stops!**

FIGURES



Rapid changes of these notes ad. lib. Try to avoid any regular figures.

Crosses and flats are valid only during the group in which they emerge.

In pages 1-9 all the pauses wanted are written in the score. The performer shouldn't make any extra ones.

FOR PROMOTIONAL USE ONLY
EMIC

FOR PROMOTIONAL USE ONLY



Fantasy

On the hymn "Tibi laus salus sit Christe"

Version for pneumatic organ

Tiina Myllärinen (2011)

Allegretto ♩ = 120 Giocoso ♩ = 176 (or faster)

Man. I

Principal 8'
mf

Man. I

♩ = 120

Man. III

♩ = 176 ♩ = 120 ♩ = 176 *Terz 1 3/5'*

Man. I

Man. I

♩ = 120

Man. III

♩ = 176 (*Terz 1 3/5'*)

Man. I

FOR PROMOTIONAL USE ONLY

Fantasy_version for pneumatic organ

2

Man. I

$\text{♩} = 120$

Man. I

$\text{♩} = 176$

Man. I

accel.

Man. I

accel.

$\text{♩} = 120$

Man. I

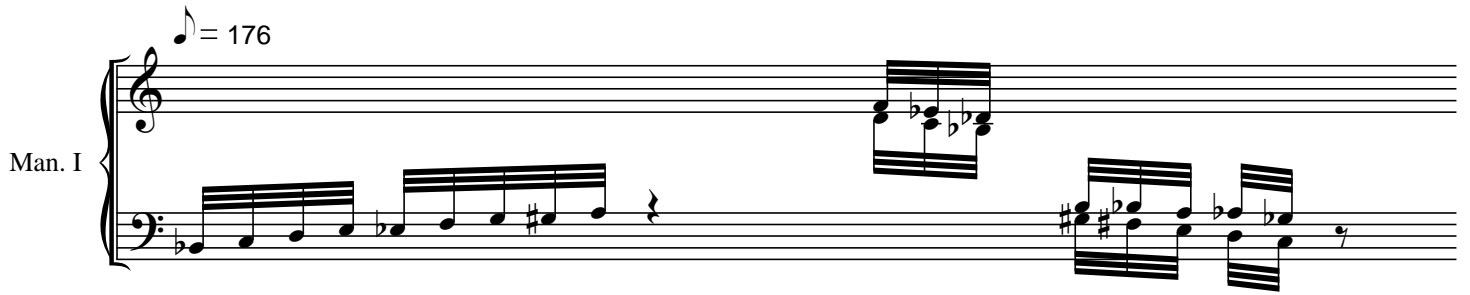
$\text{♩} = 176$

$\text{♩} = 120$

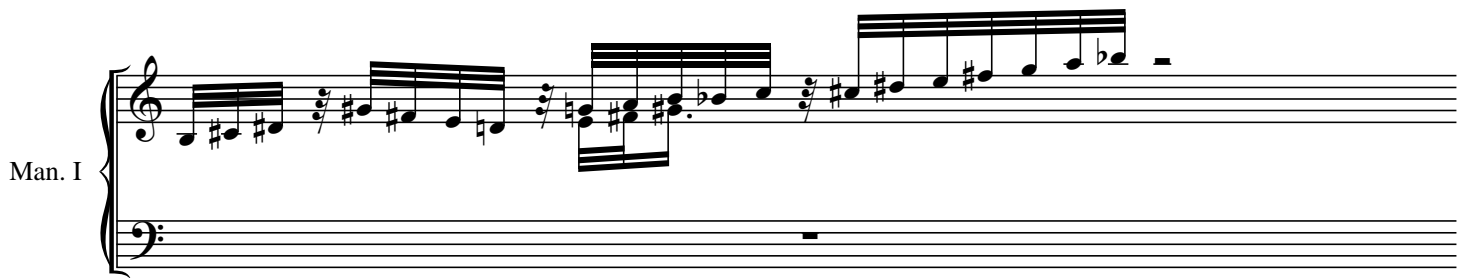
FOR PROMOTIONAL USE ONLY

Man. I

$\text{♩} = 176$



Man. I



Man. I

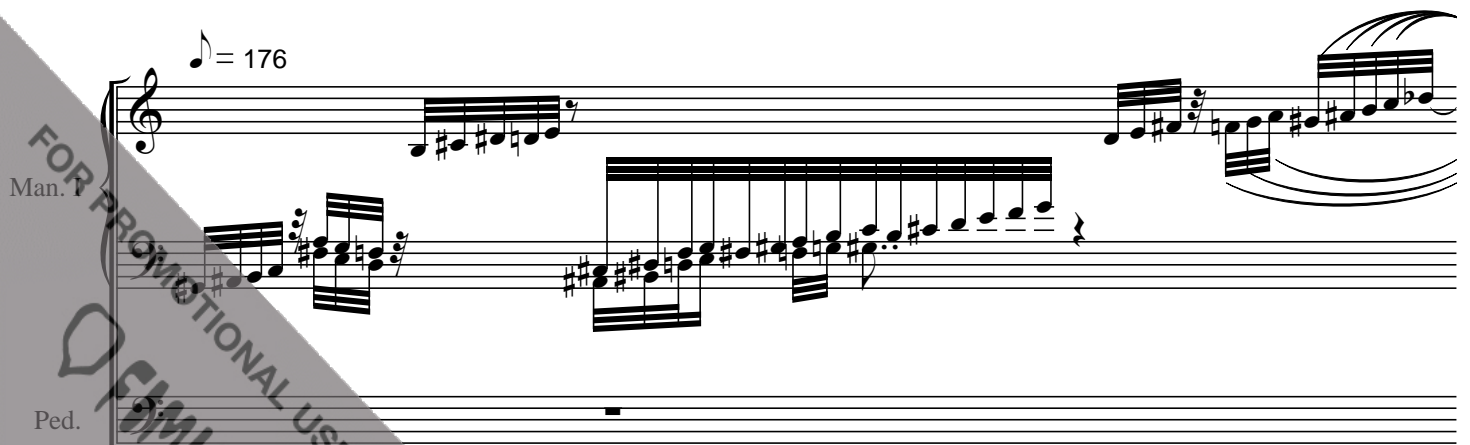
$\text{♩} = 120$



Man. I

Ped.

$\text{♩} = 176$



FOR PROMOTIONAL USE ONLY



Fantasy_version for pneumatic organ

4

Man. I

(keys off)

Ped.

Violoncello 8'

$\text{♩} = 120$

Man. I

Ped.

$\text{♩} = 176$

Man. I

Ped.

rit.

Man. I

Octava 4'

Man. I

Principal 8'

Ped.

$\text{♩} = 120$

FOR PROMOTIONAL USE ONLY

FIMIC

$\text{♩} = 176$

Man. II

Man. I

Man. II

Man. I

Man. II

Man. I

(Man. I)

Man. I

rit.

(keys off)

Man. I

FOR PROMOTIONAL USE ONLY

Fantasy_version for pneumatic organ

6

Principal 16'

Man. I

Ped.

Geigenprincipal 8'

Man. II

Man. II

Ped.

accelerando-----

-----*ritardando*

Man. II

(16') Man. I

Ped.

(keep fingers down as long as poss.)

Man. II

Man. II

Ped.

Man. II

Man. I

Ped.

Principal 8' rit.

Violonbass 16' rit.

FOR PROMOTIONAL USE ONLY

QIMIC

(♩ = 176, or as fast as possible)

Man. II *Singend regal 4'*

Man. I

Man. II

Man. I

Man. II

Man. I

Man. II *Geigenprincipal 8'*

Man. I *Principals 16'* *3:5* *4:6* *accelerando* *Principal 8'*

FOR PROMOTIONAL USE ONLY

Man. II

Man. I

8:3

11:4

6

3

Man. II

Man. I

Querflöte 4'

Octava 4'

5

accel.

8:5

rit.

accel.

16:12

Man. II

Man. I

Principal 16'

rit.

8:17

accel.

11:8

4:3

(9)

Man. II

Man. I

Flöte 8'

Nachthorn 8'

4:3

rit.

4:6

6:4

Flauto Major 8'

5:4

Octava 4'

10:5

FOR PROMOTIONAL USE ONLY

FIMIC

Fantasy_version for pneumatic organ

(Terz 1 3/5')
(free tempo)

20"-30" 3"-5"

Man. III

Man. II

(note durations are relative)

+Gems- +Geigen- +Sesqui-
horn 8' principal 8' altera 2f

15"-20"

Man. III

Man. II

Flöte 8'
Nachthorn 8'

c. 1"50

Man. III

Man. II

Man. I

accel.

+Tremolo +Krummhorn 8'

-Tremolo -Krummhorn 8'

+Rohrflöte 8'
+Mixture 4-6f

♩ = 120

Man. III

Man. II

FOR PROMOTIONAL USE ONLY

Man. III (Terz 1 3/5') (free tempo)

Man. II Sesquialtera 2f (cromatic cluster) Flöte 8' Nachthorn 8'

Man. III ♩ = 120

Man. II

Man. III

Man. II (cromatic clusters)

Man. III

Man. II

FOR PROMOTIONAL USE ONLY

(Terz 1 3/5')

Man. III

Man. II

Man. I

Ped.

Octava 4'
Singend regal 4'
Piccolo 2'

Trompete 8'
Fagott 16'
(cromatic clusters)

Subbass 16'
Echobass 16'

I (free tempo)

Man. I

Ped.

+Grand Bordun 32'

+Posaune 16'

(Terz 1 3/5')

Man. III

Man. I

Ped.

Flöte 8'
Nachthorn 8'

Echobass 16'

FOR PROMOTIONAL USE ONLY
FIMIC

(Terz 1 3/5')

Man. III

Man. II

Ped.

Man. III

Man. II

(free tempo)

$\text{♩} = 120$

Man. III

Man. II

+Tremolo -Trem.

+Tremolo

$\text{♩} = 116-132$

WITHOUT REGISTRATION!

Man. III

Man. I

Man. I

(cont. sim.)

WITHOUT REGISTRATION!

(increase the amount of tremolos, diminish the amount of pauses; tremolos lead to figures)

c. 15"

FOR PROMOTIONAL USE ONLY

QFIMC

$\text{♩} = 176$
Man. III

Man. III

Musical staff for Man. III in treble clef. It begins with a series of eighth notes, followed by a rest, and then a series of chords and eighth notes.

Man. I Man. II

Man. I

Musical staff for Man. I and Man. II. Man. I is in treble clef and Man. II is in bass clef. Both play eighth notes and chords.

Man. II

Man. II

Musical staff for Man. II in bass clef. It features a series of eighth notes and chords.

Man. III

Man. III

Musical staff for Man. III in treble clef. It starts with a series of eighth notes under a slur, followed by a rest and then a series of chords and eighth notes. The word "accel." is written below the first part.

Harmonia aethera 4f

Man. III

Man. II

Musical staff for Man. III and Man. II. Man. III is in treble clef and Man. II is in bass clef. Both play eighth notes and chords. The word "accel." is written above the Man. III staff, and "poco accel." is written below the Man. III staff. The section ends with a double bar line and a treble clef.

FOR PROMOTIONAL USE ONLY

Man. II
Singend regal 4'

WITHOUT REGISTRATION!

Man. III

Man. II

Man. III

Man. III

Man. III

Man. II

Man. II

Man. III

Man. II

FOR PROMOTIONAL USE ONLY

Man. III

Man. II

Man. III

Man. II

3♩:5♩

accel. 4♩:6♩

♩ = 120

Man. III

Man. II

Man. I

Voix celeste
Trompet harm. 8'

Krummhorn 8'
Geigenprincipal 8'

Camba 8'
Trompete 8'

(chromatic cluster)

3

3

FOR PROMOTIONAL USE ONLY

FIMIC

c. 40" (cont. sim)

Man. III

Open and close the stops manually, first only one stop and then more stops at the same time (changing the amount of stops).
Try to make sound like rain (starts slowly, then accelerates).

Man. II (cont. sim)

Man. I (cont. sim)

Ped. (cont. sim)

WITHOUT REGISTRATION!

c. 4"

Voix celeste (fast changes, rhythms ad lib.)
Fugara 8'

Man. III *Harmonia aetheria 4f*

Man. II *Nachthorn 8'*
Gemshorn 8' *Sesquialtera 2f*

Man. I *Flauto major 8'* *Mixtur 4-6f*

c. 20"

WITHOUT REGISTRATION!

Man. III (elbow cluster)

Man. II (elbow)

Man. I (white-key clusters) (sim.)

(cresc. is more clusters, dim. less clusters)

FOR PROMOTIONAL USE ONLY

FIMIC

Man. III *Flageolet 2'*
p

Man. II

Man. I *Trompette 8'*
f *mf* *f* *p* *pp* *ff* *mf* *p* *f* *pp* *mf* *f* *mp* *f* *mf* *f* *ff* *mf* *ff* *f*

Ped.

Registration improvisation

All 8' registers

$\text{♩} = \text{c. } 84$

Man. III *Flageolet 2'*
p

Man. II *ff* (palm cluster)

Man. I (elbow cluster) *Principal 16'* (palm) *ff*

Ped.

Klarine 4'
Viola d'amore 4'
Flauto dolce 4'

Man. III

Man. I

Ped.

c. 1"50

Man. III *Trompet harm. 8'*

Man. I *Kornett 3-4f*
Trompette 8'

Violoncello 8'
Violonbass 16'

+ *Grand Bordun 32'*

c. 6"

Man. III
Klarine 4'

Man. I
Kornett 3-4 f

Man. I
Kornett 3-4f
Octava 8'

Ped.

Musical score for the first system. It consists of three staves. The top staff is for Man. III Klarine 4', the middle for Man. I Kornett 3-4f Octava 8', and the bottom for Ped. The music is in a key with three sharps (F#, C#, G#) and a 4/4 time signature. The Man. III part has a melodic line with some grace notes. The Man. I part has a more rhythmic accompaniment. The Ped. part has a bass line with some sustained notes.

Man. II:
Krummhorn 8'
Flöte 8'
Piccolo 2'

Man. III:
Fugara 8'
Flauto dolce 4'
Viola d'amore 4'

c. 10"

cont. sim.

Man. II Man. III Man. I

Man. II Man. III

Man. II Man. III Man. I Man. III

Ped.

Musical score for the second system. It consists of three staves. The top staff has Man. II and Man. III parts, the middle for Man. II and Man. III, and the bottom for Ped. The Man. II and Man. III parts are primarily sustained chords. The Ped. part has a rhythmic accompaniment. The system ends with a 'cont. sim.' instruction.

FOR PROMOTIONAL USE ONLY
 FIMIC

♩ = 60

Man. I:
Octava 8'

Man. II:
all 8' registers

Man. III:
Fugara 8'

Man. II:
Krummhorn 8'

Man. III:
Klarine 4'
Viola d'amore 4'
Flauto dolce 4'

♩ = 80

+Octava 4'
+Octava 2'
+Quinta 2 2/3'
+Mixtur 4-6 f
+Fagott 16'
+Trompet 8'

+Quintadena 8'
+Principal 16'

Rohrflöte 8'

FOR PROMOTIONAL USE ONLY
FIMIC

Fantasy_version for pneumatic organ

20

Viola d'amore 4'
 Flute dolce 4'
 Flageolet 2'
 Terz 1 3/5'
 Harmonia aetheria 2 2/3'
 III 4'

Gemshorn 8'
 Nachthorn 8'
 Krummhorn 8'
 Flöte 8'
 Geigen principal 8'
 Singend regal 4'

III/II
 III: Terz 1 3/5'
 Querpfeife 2 2/3'
 II: Gemshorn 8'
 Krummhorn 8'
 Sesquialtera 2f
 Querflöte 4'
 Piccolo 2'

Man. III

Man. II

Man. I

Ped.

3:5

(key off)

$\text{♩} = \text{c. } 66$

III: Gedakt 8'
 Flauto dolce 4'
 II: Piccolo 2'
 Querflöte 4'
 Gemshorn 8'

III: + Trem.
 II: + Trem.

Man. II

Ped.

rit.

(keys off)

c. 30"

Registrations
 off

Man. II

Ped.

FOR PROMOTIONAL USE ONLY

FIMIC