

Eero Hämeenniemi

# Aria

for Horn Solo in F

1978



**Music Finland**

Copyright © by the Composer

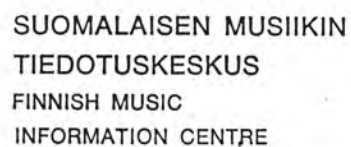
A

may be copied  
by any means  
of the composer

THIS PREVIEW  
IS IN LOW RESOLUTION

For promotional  
use only

Music Finland



RUNEBERGINKATU 16 A 1  
 SF-00100 HELSINKI  
 FINLAND

3749

Aria

Comp solo in F

omistettu Eva - Petteri Saloselle

Cambridge

A handwritten musical score for the song "The Rose Tree". The score is written on two staves. The top staff uses a treble clef and a key signature of one sharp (F#). The melody consists of the following notes: G4 (quarter), A4 (quarter), B4 (quarter), A4-G4 (beamed eighth notes), F#4 (quarter), E4 (quarter), D4 (half), and C4 (half). The bottom staff uses a bass clef and a key signature of one sharp. The accompaniment consists of the following notes: G3 (quarter), A3 (quarter), B3 (quarter), A3-G3 (beamed eighth notes), F#3 (quarter), E3 (quarter), D3 (half), and C3 (half). The piece begins with a piano (p) dynamic marking and ends with a fortissimo (fff) dynamic marking.

A handwritten musical score for the song "The Rose Tree". The score is written on two staves. The top staff uses a soprano clef and contains a melody with various note values, including quarter, eighth, and sixteenth notes, as well as rests. The bottom staff uses a bass clef and contains a bass line with similar note values. The music is in 2/4 time, as indicated by the time signature. The key signature has one flat (B-flat). The score includes dynamic markings: *pp* (pianissimo) at the beginning, *f* (forte) in the middle, and *p* (piano) towards the end. There are also crescendo and decrescendo hairpins. The piece concludes with a double bar line and a repeat sign.

For promotional use only





Handwritten musical notation on a grand staff. The treble clef staff contains notes with various accidentals (sharps, flats, naturals) and dynamic markings (p, f, pp, ff) with crescendo and decrescendo hairpins. The bass clef staff contains corresponding notes and dynamic markings.

Handwritten musical notation on a grand staff. The treble clef staff contains notes with various accidentals and dynamic markings (p, f, pp, ff). The bass clef staff contains corresponding notes and dynamic markings. A fermata is present over the final note of the treble staff.

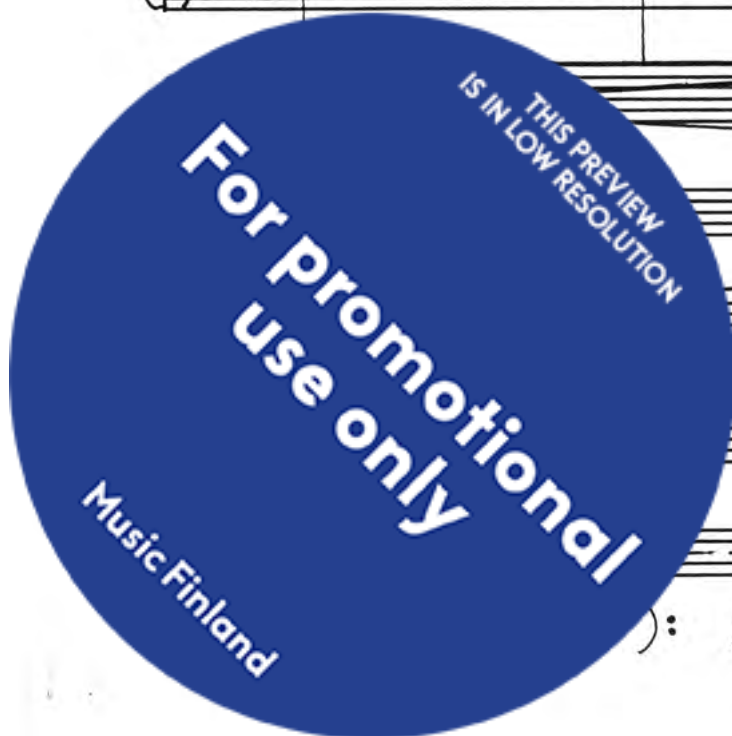
Handwritten musical notation on a grand staff. The treble clef staff contains notes with various accidentals and dynamic markings (p, f, mp, pp). The bass clef staff contains corresponding notes and dynamic markings. A fermata is present over the final note of the treble staff.

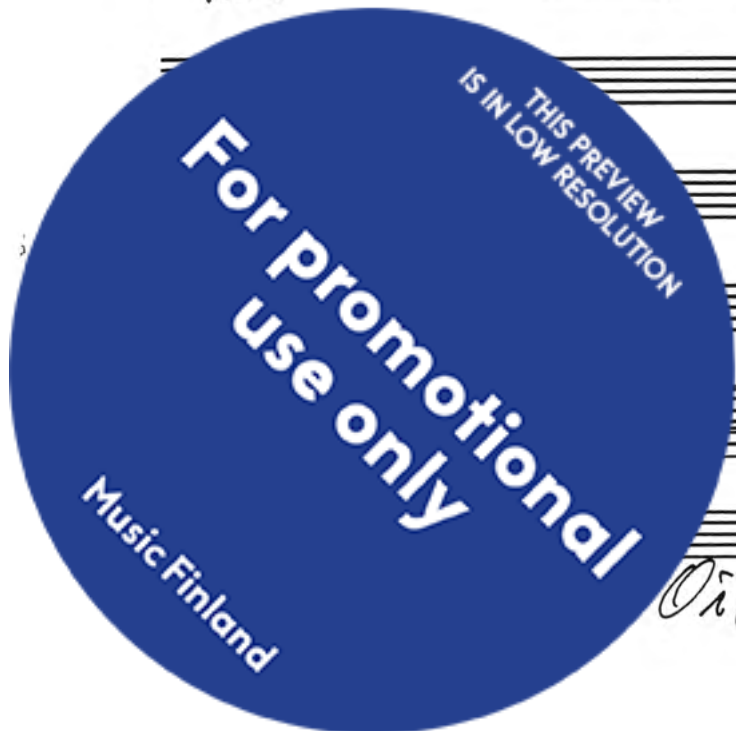
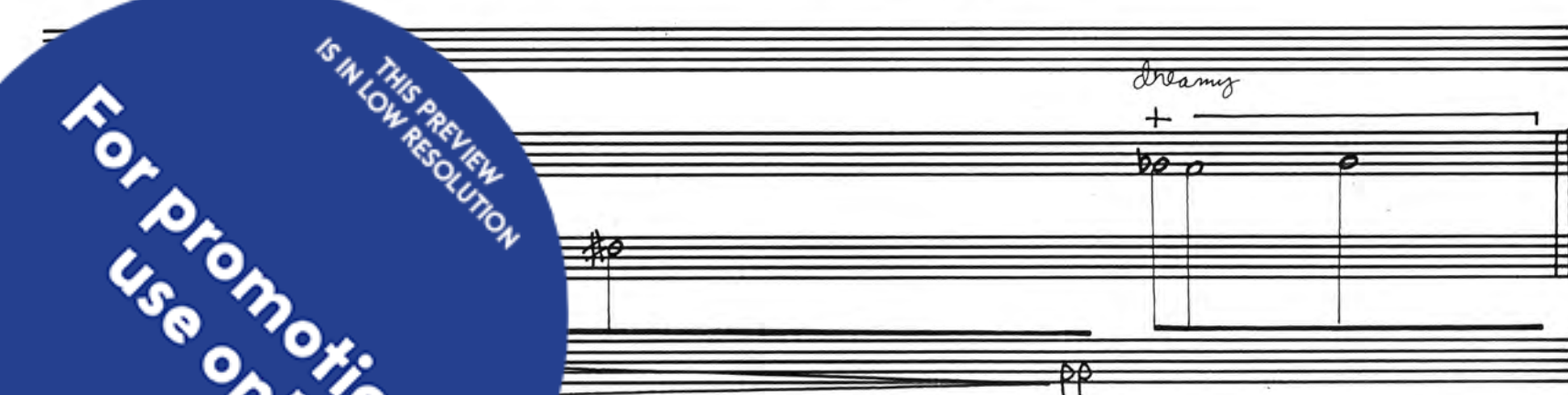
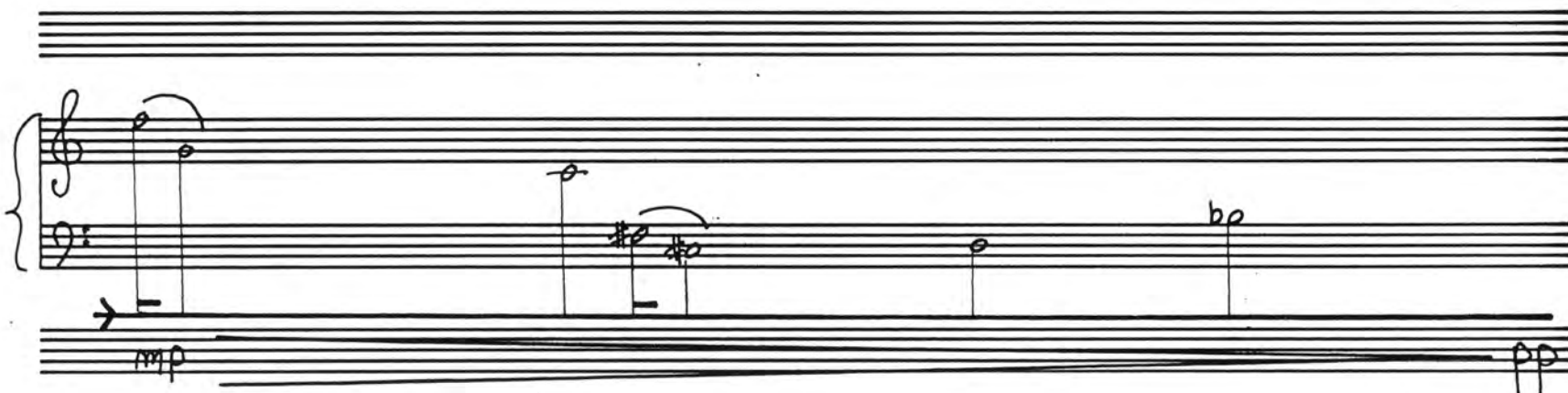
Handwritten musical notation on a grand staff. The treble clef staff contains notes with various accidentals and dynamic markings (p, f, mp, pp). The bass clef staff contains corresponding notes and dynamic markings. A fermata is present over the final note of the treble staff.

Handwritten musical notation on a grand staff. The treble clef staff contains notes with various accidentals and dynamic markings (p, f, mp, pp, ff). The bass clef staff contains corresponding notes and dynamic markings. A fermata is present over the final note of the treble staff.

Handwritten musical notation on a grand staff. The treble clef staff contains notes with various accidentals and dynamic markings (p, f, mp, pp, ff). The bass clef staff contains corresponding notes and dynamic markings. A fermata is present over the final note of the treble staff.

5↓





Oitti 17.6-78 *Eero Hämeenniemi*  
Eero Hämeenniemi