

Jukka Tiensuu

# Prélude non-mesuré

for piano

op. 19

1976

THIS PREVIEW  
IS IN LOW RESOLUTION  
**For promotional  
use only**

Music Finland

Music Finland

THIS PREVIEW  
IS IN LOW RESOLUTION

**For promotional  
use only**

Music Finland

Jukka Tiensuu: PRELUDE NON-MESURE for piano (1976)

PRELUDE NON-MESURE begins with section A ("Alku" = beginning) and ends with section L ("Loppu" = end). Sections B, C, D, E, F, G, H, I, J and K can be played in any order, not all of them need to be played and anyone of them can be played more than once.

The performer can relatively freely choose the tempos, dynamics, phrasing, pedalling and even articulation and character of these sections; preferably his choices should vary from performance to performance. Some possibilities are given below and in the score in brackets ( ).

No pauses between sections are necessary. It would be preferable to proceed from one section to another *attacca*, sometimes emphasizing the contrast between them, sometimes almost unnoticed. Pedal can be used also to avoid silences between sections and even occasional slight overlapping of sections is acceptable. The duration of the piece should usually vary from 5 to 15 minutes.

For accuracy of performance it is important that the following strings and the precise nodal points for harmonics be clearly marked:

Strings to be muted or plucked (sections I and L):  $D_1 - F_1 G_1^\# C_2^\# F_2^\# f_2^\# g g^\# a b^\flat b c' d^\# - g''$

Nodal points for harmonics (sections F, I and L): 2<sup>nd</sup> (4<sup>th</sup>) harmonic: C D

7<sup>th</sup> harmonic:  $B_2 C_3 C_3^\# F_3 F_3^\# G_3$

11<sup>th</sup> harmonic:  $D_1 E_1^\flat E_1$

More detailed notes on sections:

- A** Like in the keyboard preludes of the eighteenth century French composers the tempo, articulation, phrasing, rhythmic figures, and distinction between "melodic" and "harmonic" elements is left to the performer's taste. (However, he is encouraged to look for contrasted rhythmic, dynamic and articulative characteristics in different performances and even within one performance: *recitativo - capriccioso - fulminante - serene - appassionato - rassegnato...*) The dotted lines show only one of many possibilities for articulation.
- B** Inside the piano. Play blocks in any order; repeat any number of times. (*furioso; capriccioso; grandioso*)
- C** While playing on keyboard mute the corresponding strings (at bridge). (For muting use any material; play with pedal to catch resonances; *nervoso; capriccioso; scherzando*) If barring of the piano makes it difficult to mute the indicated pitches, octave transpositions can be used.
- D** (*lentissimo; misterioso; fff-grandioso; disperato*)
- E** "Non-mesuré". Start anywhere, stop anywhere and repeat any number of times. (*scherzando; tranquillo; furioso; come una macchina; capriccioso; festivo*)
- F** To hear clearly the beating caused by the slight differences between the harmonics and their enharmonic tempered tones, the tempered tone should not sound louder than the resonance of the harmonic. (*lento marcato; andante fremente*)
- G** (*adagio lamentoso; andantino appassionato; largo lugubre*)
- H** Press keys down without sound (mime the performance). (*molto appassionato; scherzando; meditando*)
- I** s.p. = pluck at bridge. sul 8<sup>va</sup> = pluck at middle of string. (*misterioso; sinistro*)
- J** (*leggierissimo; secco; capriccioso; martellato; scherzando; espressivo con bravura*)
- K** Clusters on keyboard (and on strings) played with arms, palms and fists. (*tempestoso; misterioso; furioso*)

preferably of different character.

THIS PREVIEW  
IS IN LOW RESOLUTION  
For promotional  
use only  
Music Finland



pluck cluster of strings



cluster with palm on the lowest strings

strings violently letting them rattle against each other

( ) keeping right pedal down. (avoid too obvious glissandos)

( ) while playing on keyboard



damped cluster

touch string at the indicated harmonic nodal point while hitting the key

do

without sound ( "mime" playing only )



cluster tremolo



cluster glissando or "broken" cluster

glissando on strings

# PRÉLUDE NON - MESURÉ

for piano

jukka tiensuu 1976

**A**

Handwritten musical score for section A, measures 1-12. The score is written on three systems of grand staves (treble and bass clef). The notation includes various notes, rests, and accidentals, with some notes circled in dashed lines. An arrow points to the end of the section.

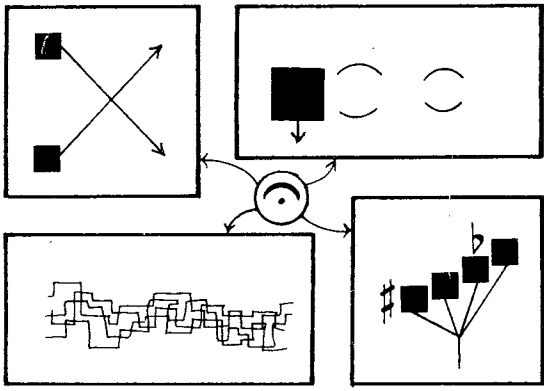
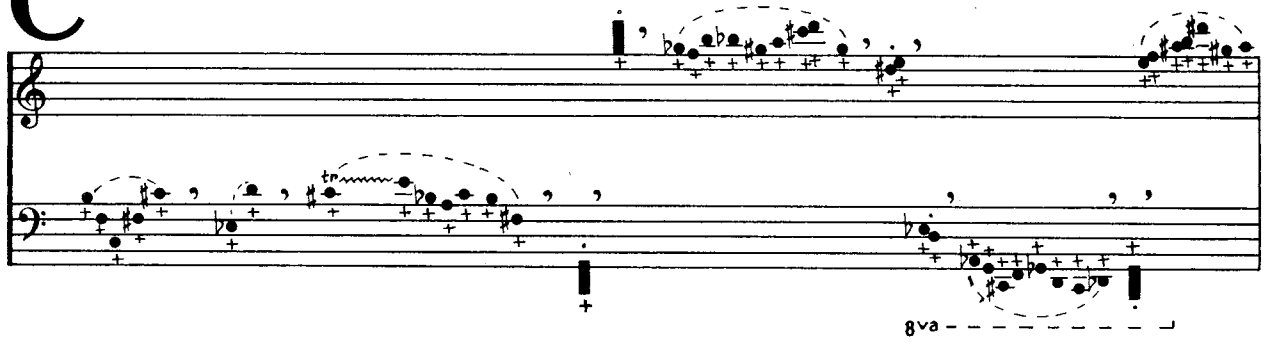
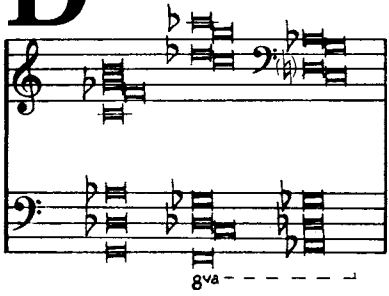
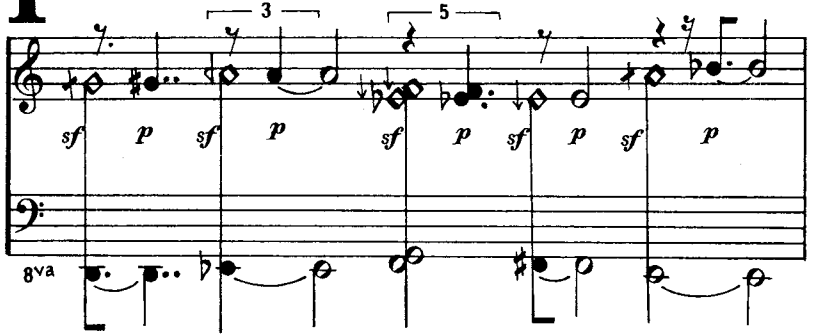
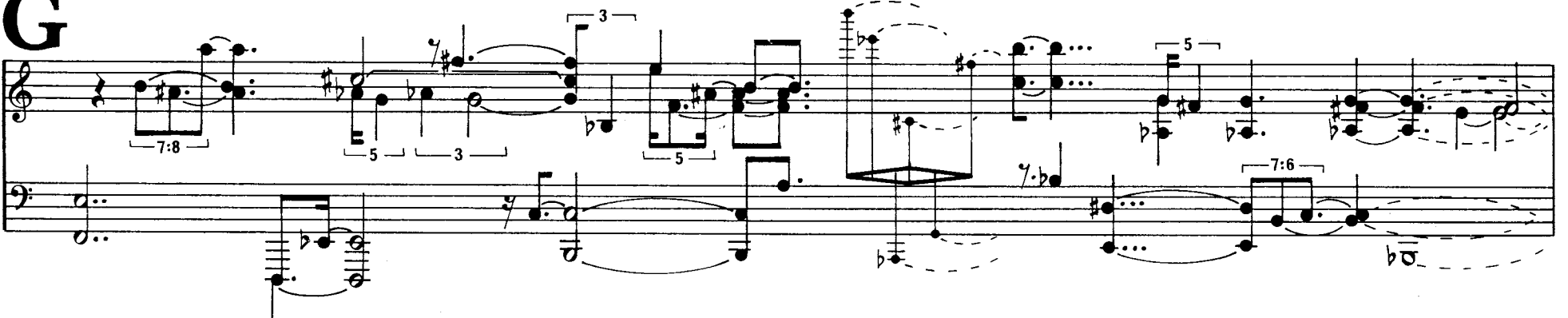
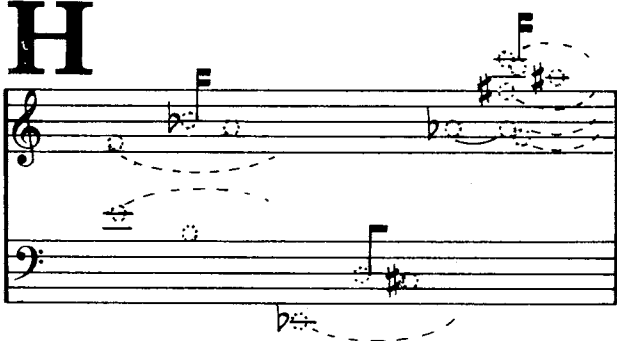
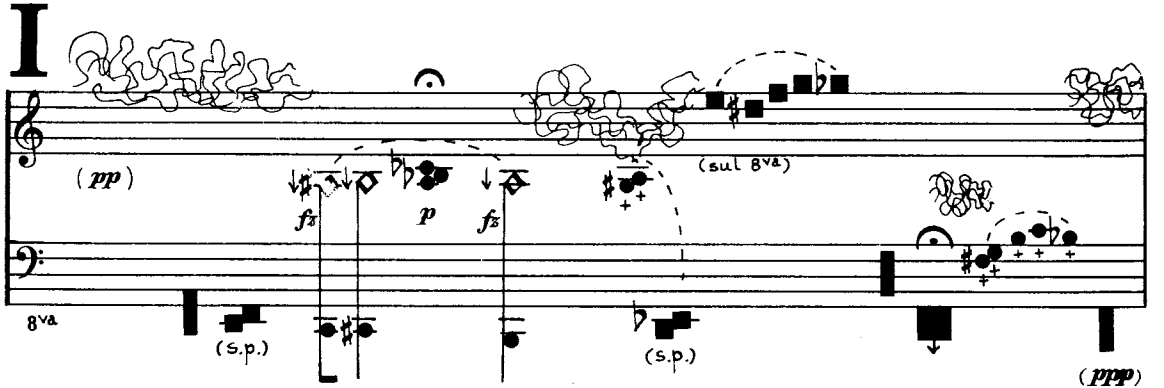
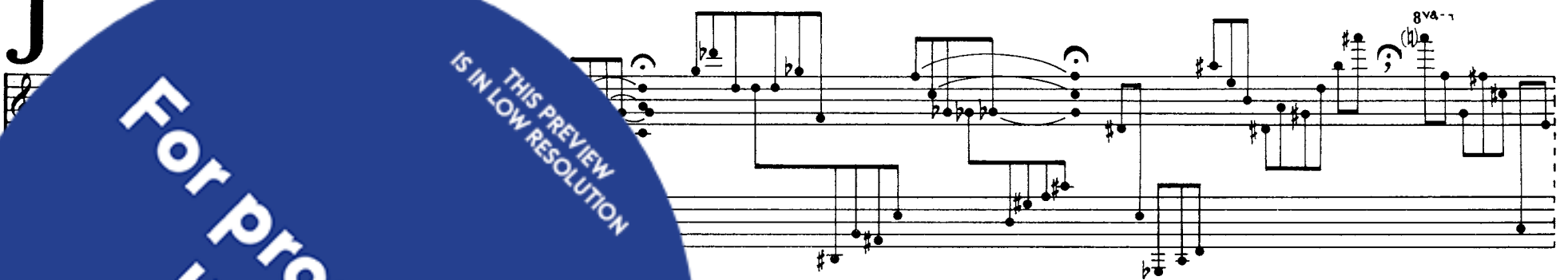
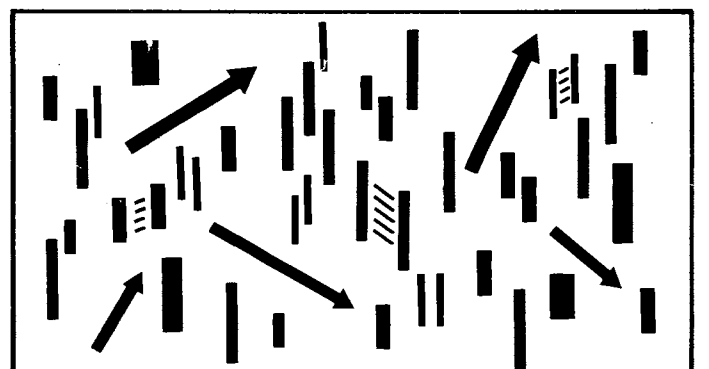
**L**

Handwritten musical score for section L, measures 13-24. The score is written on three systems of grand staves (treble and bass clef). The notation includes various notes, rests, and accidentals, with some notes circled in dashed lines. The section ends with a double bar line and the word "ossia:" followed by an alternative ending.

THIS PREVIEW  
IS IN LOW RESOLUTION

**For promotional  
use only**

Music Finland

**B****C****D****E****F****G****H****I****J****K**

THIS PREVIEW  
IS IN LOW RESOLUTION

For promotional  
use only

Music Finland